



PRODUCT CODE

MT-1200-2

MD-1200-1

MD-1200-2

ME-1200-1

ME-1200

MT-800-2

MD-800-1

MD-800-2

ME-800



MULTIPURPOSE OVENS USER MANUAL





ME-1200-1



MD-1200-1



MK-1200-D



ME 1200

CONTENTS

NO	ISSUES
1-2	COVER
3	CONTENTS
4	PRESENTATION
5-6	TECHNICAL SPECIFICATIONS
7-8	ELECTRIC SCHEME
9	WARNING SIGNS
10-11	PRODUCT LABEL INFORMATION
12	SAFETY WITH DETAILS
13	HANDLING AND RELOCATION
14-20	USING THE DEVICE, CLEANING AND MAINTENANCE
21	WARRANTY CONDITIONS
22-25	EXPLODED VIEW / SPARE PART LIST
26	CE DECLARATION

PRESENTATION

Hi there,

We thank you for your confidence in choosing our device and our company. Our devices are used in 60 countries around the industrial kitchen with you. Our device is manufactured in accordance with international standards.

To receive output from the device to your expectations, and certainly you read the manual to use long-term, we strongly advise users to your instructor. Before calling our service, we ask you to consider the following points.

- ☞ Guide your hand, please read carefully before use and using the device, to allow the reading of using the device. When you run manual reading device from the machine will be out of warranty.
- ☞ Order installation of our product you received, giving information about the use and care manual in accordance with the laws and regulations of the electrical installation is carefully be read. Device connection way qualified personnel of our authorized service personnel to ensure good preparation before for installation.
- ☞ Hesitate to point you understand that you and your nearest you want information from an authorized phone service.
- ☞ If the stand of costs and service personnel called for Assembly Keep in mind that for every hour waiting fee will be billed to you.
- ☞ We hope you get the most out of our product ...



TECHNICAL SPECIFICATIONS

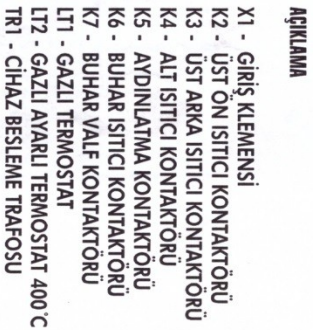
MODEL	MT-800-2	MD-800-2	MD-800-1	ME 800
EXTERIOR DIMENSIONS (x-y-z cm)	126 X 102 x 205	126 x 102 x 185	126 x 102 x 185	126 x 102 x 40
INTERNAL DIMENSIONS (X-y-z cm)	3 PIECES 84 x 84 x 18	2 PIECES 84 x 84 x 18	2 PIECES 84 x 84 x 18	1 PIECE 84 x 84 x 18
TOTAL ELECTRIC POWER (KW)	25,5 KW (with Steam System- 29,7KW)	18 KW (with Steam System- 20,8KW)	15 KW (with Steam System- 17,8KW)	7,5 KW (with Steam System- 8,9KW)
POWER SUPPLY VOLTAGE (V)	380-400 V 3 NPE	380-400 V 3 NPE	380-400 V 3 NPE	380-400 V 3 NPE
OPERATING FREQUENCY (Hz)	50/60	50/60	50/60	50/60
THERMOSTAT RANGE (°C)	50-400	50-400	50-400	50-400
POWER CORD mm (H07 RNFR)	5 x 6	5 x 6	5 x 6	5 x 4
PROTECTION CLASS	IP 20	IP 20	IP 20	IP 20
NET WEIGHT (KG)	498 (with Steam System- 543kg)	383 (with Steam System- 413kg)	355 (with Steam System- 385kg)	130 (with Steam System- 145kg)
RATED CURRENT (A)	100	75	50	25
INSULATION	ROCK WOOL	ROCK WOOL	ROCK WOOL	ROCK WOOL
COOKING STONE	FIRECLAY STONE	FIRECLAY STONE	FIRECLAY STONE	FIRECLAY STONE
LIGHTING	6 PIECES 25 W	4 PIECES 25 W	4 PIECES 25 W	2 PIECES 25 W
CAPACITY(CM) (PER FLOOR)	40x80x2 Pieces 40x60x2 Pieces 40x40x4 Pieces Ø 40x4 Pieces	40x80x2 Pieces 40x60x2 Pieces 40x40x4 Pieces Ø 40x4 Pieces	40x80x2 Pieces 40x60x2 Pieces 40x40x4 Pieces Ø 40x4 Pieces	40x80x2 Pieces 40x60x2 Pieces 40x40x4 Pieces Ø 40x4 Pieces

TECHNICAL SPECIFICATIONS

MODEL	MT-1200-2	MD-1200-2	MD-1200-1	ME-1200_1	ME 1200
EXTERIOR DIMENSIONS (x-y-z cm)	166 x 102 x 205	166 x 102 x 185	166 x 102 x 185	166 x 102 x 165	166 x 102 x 40
INTERNAL DIMENSIONS (X-y-z cm)	3 PIECES 124 x 84 x 18	2 PIECES 124 x 84 x 18	2 PIECES 124 x 84 x 18	1 PIECE 124 x 84 x 18	1 PIECE 124 x 84 x 18
TOTAL ELECTRIC POWER (KW)	34,5 KW (with Steam System-43,5KW)	24 KW (with Steam System-30KW)	21 KW (with Steam System-27KW)	10,5 KW (with Steam System-13,5KW)	10,5 KW (with Steam System-13,5KW)
POWER SUPPLY VOLTAGE (V)	380-400 V 3 NPE	380-400 V 3 NPE	380-400 V 3 NPE	380-400 V 3 NPE	380-400 V 3 NPE
OPERATING FREQUENCY (Hz)	50/60	50/60	50/60	50/60	50/60
THERMOSTAT RANGE (°C)	50-400	50-400	50-400	50-400	50-400
POWER CORD mm (H07 RNFR)	5 x 10	5 x 6	5 x 6	5 x 4	5 x 4
PROTECTION CLASS	IP 20	IP 20	IP 20	IP 20	IP 20
NET WEIGHT (KG)	660 (with Steam System-727,5kg Fullstone-810kg)	505 (with Steam System-550kg Fullstone-605kg)	455 (with Steam System-500kg Fullstone-555kg)	290 (with Steam System-312,5kg Fullstone-340kg)	170 (with Steam System-192,5kg Fullstone-220kg)
RATED CURRENT (A)	121	89	64	32	32
INSULATION	ROCK WOOL	ROCK WOOL	ROCK WOOL	ROCK WOOL	ROCK WOOL
COOKING STONE	FIRECLAY STONE	FIRECLAY STONE	FIRECLAY STONE	FIRECLAY STONE	FIRECLAY STONE
LIGHTING	6 PIECES 25 W	4 PIECES 25 W	4 PIECES 25 W	2 PIECES 25 W	2 PIECES 25 W
CAPACITY(CM) (PER FLOOR)	40x80x3 Pieces 40x60x4 Pieces 40x40x6 Pieces Ø 40x6 Pieces	40x80x3 Pieces 40x60x4 Pieces 40x40x6 Pieces Ø 40x6 Pieces	40x80x3 Pieces 40x60x4 Pieces 40x40x6 Pieces Ø 40x6 Pieces	40x80x3 Pieces 40x60x4 Pieces 40x40x6 Pieces Ø 40x6 Pieces	40x80x3 Pieces 40x60x4 Pieces 40x40x6 Pieces Ø 40x6 Pieces



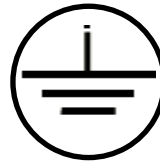
TAVSİYE EDİLEN SGS KATLI BUHARLI FIRIN ELEKTRİK BAĞLANTI ŞEMASI



WARNING SIGNS



PROTECTION GROUNDING



PE

GROUNDING NETWORK



ELECTRICITY



HIGH TEMPERATURE

ELECTRICAL CONNECTION VALUES

380V -400V / 50/60 Hz

Voltage : 380 V - 400 V
Network Access : 380-400 V
3 NPE

Terrestrial Trunked
Frequency: 50 / 60Hz.

PRODUCT LABEL INFORMATION

ÇOK AMAÇLI FIRINLAR / MULTIPURPOSE OVENS

SGS		TEL : +90 (0232) 257 52 23-33 FAX : +90 (0232) 257 53 03
MODEL (Type) ME 1200 X 800	TARİH (Date) 01.2019	CE
SERİ NO (Serial) 21112	AĞIRLIK (Weight) 170 Kg	
GÜÇ (Power) 10,5 KW	VOLTAJ (Voltage) 400 V 3F + N	CONNECTING TABLE BROWN L1 BLACK L2 GREY L3 BLUE N YELLOW/GREEN \perp
FREKANS (Frequency) 50-60 Hz	IP 20	
AKIM (Current) 32 A	SINIF (Class) 1	
SGS MUTFAK EKİPMANLARI LTD.ŞTİ. / MADE IN TURKEY Cumhuriyet Mah.Balkan Cad.No 20 Yazıbaşı / TORBALI / İZMİR www.sgsoven.com info@sgsoven.com		

ÇOK AMAÇLI FIRINLAR / MULTIPURPOSE OVENS

SGS		TEL : +90 (0232) 257 52 23-33 FAX : +90 (0232) 257 53 03
MODEL (Type) ME 800 X 800	TARİH (Date) 08.2019	CE
SERİ NO (Serial) 20738	AĞIRLIK (Weight) 130 Kg	
GÜÇ (Power) 7,5 KW	VOLTAJ (Voltage) 400 V 3F + N	CONNECTING TABLE BROWN L1 BLACK L2 GREY L3 BLUE N YELLOW/GREEN \perp
FREKANS (Frequency) 50-60 Hz	IP 20	
AKIM (Current) 25 A	SINIF (Class) 1	
SGS MUTFAK EKİPMANLARI LTD.ŞTİ. / MADE IN TURKEY Cumhuriyet Mah.Balkan Cad.No 20 Yazıbaşı / TORBALI / İZMİR www.sgsoven.com info@sgsoven.com		

ÇOK AMAÇLI FIRINLAR / MULTIPURPOSE OVENS

SGS		TEL : +90 (0232) 257 52 23-33 FAX : +90 (0232) 257 53 03
MODEL (Type) MD 1200 X 800 (BUHARLI)	TARİH (Date) 11.2018	CE
SERİ NO (Serial) 20805	AĞIRLIK (Weight) 192,5 Kg	
GÜÇ (Power) 13,5 KW	VOLTAJ (Voltage) 400 V 3F + N	CONNECTING TABLE BROWN L1 BLACK L2 GREY L3 BLUE N YELLOW/GREEN \perp
FREKANS (Frequency) 50-60 Hz	IP 20	
AKIM (Current) 32 A	SINIF (Class) 1	
SGS MUTFAK EKİPMANLARI LTD.ŞTİ. / MADE IN TURKEY Cumhuriyet Mah.Balkan Cad.No 20 Yazıbaşı / TORBALI / İZMİR www.sgsoven.com info@sgsoven.com		

ÇOK AMAÇLI FIRINLAR / MULTIPURPOSE OVENS

SGS		TEL : +90 (0232) 257 52 23-33 FAX : +90 (0232) 257 53 03
MODEL (Type) ME 800 X 800 (BUHARLI)	TARİH (Date) 08.2019	CE
SERİ NO (Serial) 20835	AĞIRLIK (Weight) 145 Kg	
GÜÇ (Power) 8,9 KW	VOLTAJ (Voltage) 400 V 3F + N	CONNECTING TABLE BROWN L1 BLACK L2 GREY L3 BLUE N YELLOW/GREEN \perp
FREKANS (Frequency) 50-60 Hz	IP 20	
AKIM (Current) 25 A	SINIF (Class) 1	
SGS MUTFAK EKİPMANLARI LTD.ŞTİ. / MADE IN TURKEY Cumhuriyet Mah.Balkan Cad.No 20 Yazıbaşı / TORBALI / İZMİR www.sgsoven.com info@sgsoven.com		

ÇOK AMAÇLI FIRINLAR / MULTIPURPOSE OVENS

SGS		TEL : +90 (0232) 257 52 23-33 FAX : +90 (0232) 257 53 03
MODEL (Type) ME 1200 X 800 FULL	TARİH (Date) 08.2019	CE
SERİ NO (Serial) 19724	AĞIRLIK (Weight) 220 Kg	
GÜÇ (Power) 10,5 KW	VOLTAJ (Voltage) 400 V 3F + N	CONNECTING TABLE BROWN L1 BLACK L2 GREY L3 BLUE N YELLOW/GREEN \perp
FREKANS (Frequency) 50-60 Hz	IP 20	
AKIM (Current) 32 A	SINIF (Class) 1	
SGS MUTFAK EKİPMANLARI LTD.ŞTİ. / MADE IN TURKEY Cumhuriyet Mah.Balkan Cad.No 20 Yazıbaşı / TORBALI / İZMİR www.sgsoven.com info@sgsoven.com		

MAYALAMA KABİNİ / FERMANTATION CABINET

SGS		TEL : +90 (0232) 257 52 23-33 FAX : +90 (0232) 257 53 03
MODEL (Type) MK 800	TARİH (Date) 09.2019	CE
OPERATING TEMPERATURE 0-90°	AĞIRLIK (Weight) 88 Kg	
GÜÇ (Power) 3 KW	VOLTAJ (Voltage) 220 V 1F + N	CONNECTING TABLE BROWN L1 BLUE N YELLOW/GREEN \perp
FREKANS (Frequency) 50-60 Hz	IP 20	
AKIM (Current) 25 A	SINIF (Class) 1	
SGS MUTFAK EKİPMANLARI LTD.ŞTİ. / MADE IN TURKEY Cumhuriyet Mah.Balkan Cad.No 20 Yazıbaşı / TORBALI / İZMİR www.sgsoven.com info@sgsoven.com		

MAYALAMA KABİNİ / FERMANTATION CABINET

SGS		TEL : +90 (0232) 257 52 23-33 FAX : +90 (0232) 257 53 03
MODEL (Type) MK 1200	TARİH (Date) 08.2019	CE
OPERATING TEMPERATURE 0-90°	AĞIRLIK (Weight) 120 Kg	
GÜÇ (Power) 3 KW	VOLTAJ (Voltage) 220 V 1F + N	CONNECTING TABLE BROWN L BLUE N YELLOW/GREEN \perp
FREKANS (Frequency) 50-60 Hz	IP 20	
AKIM (Current) 25 A	SINIF (Class) 1	
SGS MUTFAK EKİPMANLARI LTD.ŞTİ. / MADE IN TURKEY Cumhuriyet Mah.Balkan Cad.No 20 Yazıbaşı / TORBALI / İZMİR www.sgsoven.com info@sgsoven.com		

PRODUCT LABEL INFORMATION

MAYALAMA KABİNİ / FERMANTATION CABINET		
SGS		TEL : +90 (0232) 257 52 23-33 FAX : +90 (0232) 257 53 03
MODEL (Type) MK 800 D	TARİH (Date) 09.2019	CE
OPERATING TEMPERATURE 0-90°	AĞIRLIK (Weight) 88 Kg	
GÜÇ (Power) 3 KW	VOLTAJ (Voltage) 220 V 1F + N	CONNECTING TABLE
FREKANS (Frequency) 50-60 Hz	IP 20	BROWN L1
AKIM (Current) 25 A	SINIF (Class) 1	BLUE N
		YELLOW/GREEN \perp
SGS MUTFAK EKİPMANLARI LTD.ŞTİ. / MADE IN TURKEY Cumhuriyet Mah.Balkan Cad.No 20 Yazıbaşı / TORBALI / İZMİR www.sgsoven.com info@sgsoven.com		

MAYALAMA KABİNİ / FERMANTATION CABINET		
SGS		TEL : +90 (0232) 257 52 23-33 FAX : +90 (0232) 257 53 03
MODEL (Type) MK 800 T	TARİH (Date) 09.2019	CE
OPERATING TEMPERATURE 0-90°	AĞIRLIK (Weight) 73 Kg	
GÜÇ (Power) 3 KW	VOLTAJ (Voltage) 220 V 1F + N	CONNECTING TABLE
FREKANS (Frequency) 50-60 Hz	IP 20	BROWN L1
AKIM (Current) 25 A	SINIF (Class) 1	BLUE N
		YELLOW/GREEN \perp
SGS MUTFAK EKİPMANLARI LTD.ŞTİ. / MADE IN TURKEY Cumhuriyet Mah.Balkan Cad.No 20 Yazıbaşı / TORBALI / İZMİR www.sgsoven.com info@sgsoven.com		

MAYALAMA KABİNİ / FERMANTATION CABINET		
SGS		TEL : +90 (0232) 257 52 23-33 FAX : +90 (0232) 257 53 03
MODEL (Type) MK 1200 D	TARİH (Date) 08.2019	CE
OPERATING TEMPERATURE 0-90°	AĞIRLIK (Weight) 120 Kg	
GÜÇ (Power) 3 KW	VOLTAJ (Voltage) 220 V 1F + N	CONNECTING TABLE
FREKANS (Frequency) 50-60 Hz	IP 20	BROWN L
AKIM (Current) 25 A	SINIF (Class) 1	BLUE N
		YELLOW/GREEN \perp
SGS MUTFAK EKİPMANLARI LTD.ŞTİ. / MADE IN TURKEY Cumhuriyet Mah.Balkan Cad.No 20 Yazıbaşı / TORBALI / İZMİR www.sgsoven.com info@sgsoven.com		

MAYALAMA KABİNİ / FERMANTATION CABINET		
SGS		TEL : +90 (0232) 257 52 23-33 FAX : +90 (0232) 257 53 03
MODEL (Type) MK 1200 T	TARİH (Date) 08.2019	CE
OPERATING TEMPERATURE 0-90°	AĞIRLIK (Weight) 105 Kg	
GÜÇ (Power) 3 KW	VOLTAJ (Voltage) 220 V 1F + N	CONNECTING TABLE
FREKANS (Frequency) 50-60 Hz	IP 20	BROWN L
AKIM (Current) 25 A	SINIF (Class) 1	BLUE N
		YELLOW/GREEN \perp
SGS MUTFAK EKİPMANLARI LTD.ŞTİ. / MADE IN TURKEY Cumhuriyet Mah.Balkan Cad.No 20 Yazıbaşı / TORBALI / İZMİR www.sgsoven.com info@sgsoven.com		

SAFETY WITH DETAILS

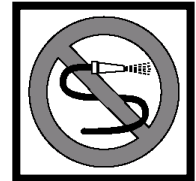
☞ Solid and liquid combustible materials of all kinds in the area where the device is working (clothing, alcohol and derivatives, petro - chemical products, wood and plastic, curtains, etc.) should not be taken.



☞ Do not clean with pressurized water.

☞ You can use our devices together with our other products in the same series.

☞ It is established in accordance with the regulations in force, and this device should be used only in a well-ventilated area. Refer to the device's facility and instructions before use.



☞ Apart from the manufacturer or its authorized service should not interfere with the device.



☞ The area in which the device is used without any reason to panic in case of fire flames flare (if any) to use the fire extinguishers closing the gas valve and power switch. Never use water to extinguish the flames.

☞ The device operating voltage 380 V 400 V 380-400 V 3 NPA

~ / 50/60 it is Hz. Do not use a power supply voltage other than that.



☞ Electrical connections to supply insurance against the danger of leakage current of 30 mA leakage current must be performed by placing insurance.



☞ If the supply cord is damaged in a Y type connection, the cord must be replaced by the manufacturer or its service agent or a similarly qualified personnel in order to prevent a hazardous situation.

☞ This device is not intended for use by persons with physical, sensory or mental capabilities (including children) or persons with inadequate experience or knowledge, unless supervision and management are concerned with the use of the device by a person responsible for the safety of the device



HANDLING AND RELOCATION

The device should never be operated under the hood.

solid and liquid combustible materials of all kinds in the area where the device is working (clothing, alcohol and derivatives, petro - chemical products, wood and plastic, curtains, etc.) should not be taken.

Do not clean with pressurized water.

This device must be installed in accordance with current regulations and should be used only in a well-ventilated area. Refer to the device's facility and instructions before use.

The device should be used only by employees who have received training about the device is made for industrial use.

The area in which the device is used without any reason to panic in case of fire flames flare (if any) to use the fire extinguishers closing the gas valve and power switch. Never use water to extinguish the flames.

a wall of the device compartment, kitchen furniture to be positioned close to the decorative covering VB.N if their coating is made from fireproof material, or a suitable non-combustible heat-insulating material the distance of 5 cm, otherwise must be at least 20 cm. It is recommended attention to obey the rules of fire protection.

set the device to be placed under the bench and set foot on the plane of the device operation should be in balance.

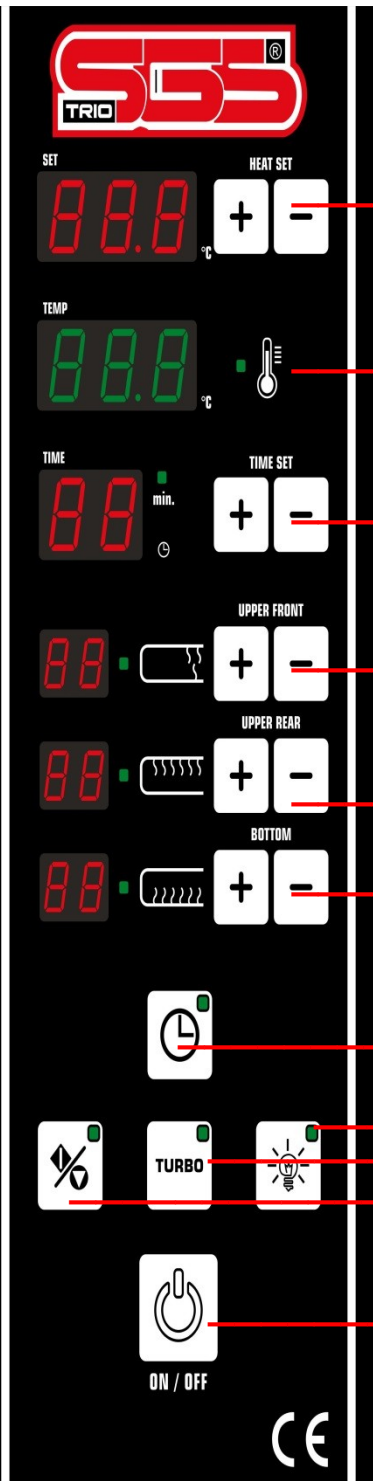
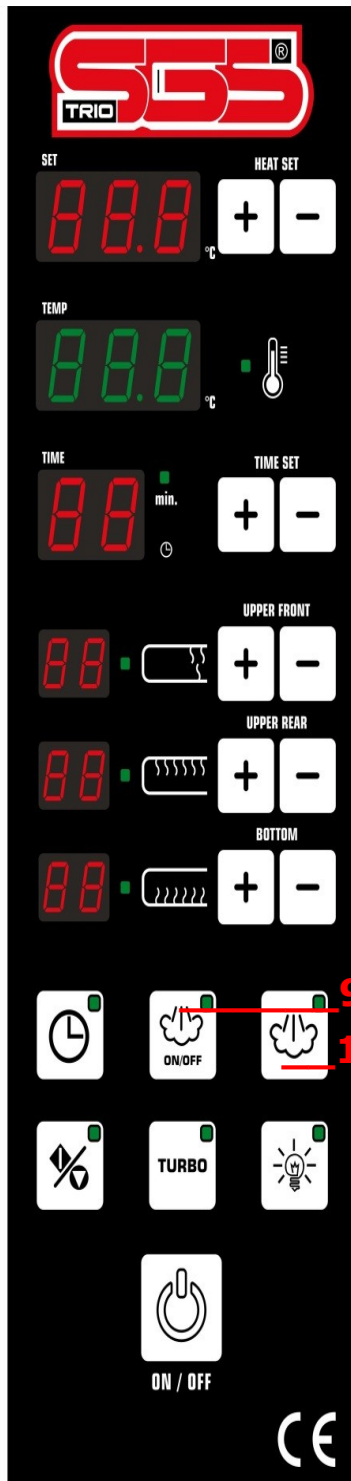
electrical connection of the device must be checked by a qualified electrician, floor max. 170 cm in height must be connected to insurance.

Electrical connection; To supply insurance against danger of leakage current of 30 mA leakage current should be done like putting insurance.

nearest grounding bar connected to the grounding of the electrical wiring of the device must be provided on board.

USING THE DEVICE CONTROL BOARD

**ATTENTION ! : APPLIANCE NEVER OPERATE from your GROUND CONNECTING
LINE**



1. TEMPERATURE SET INCREASE AND DECREASE KEY INDICATOR:

Shows the set temperature setpoint. Setpoint adjustment range of 400°C to 70°C "+" and "-" keys can be done with. If the increase and decrease buttons are held down for 3 seconds increases or decreases the value quickly. the values shown in display will be automatically stored. Related faults "Er.x" values are also seen.

2. TEMPERATURE DISPLAY AND LED:

measured temperature is the temperature inside the oven indicator. Let the temperature is below the temperature setpoint while burns and goes out after the set value.

TIME DISPLAY AND LED: The time display shows the remaining time value. Time setting range between 1 and 60 minutes, "+" and "-" keys can be done with. If the increase and decrease buttons are held down for 3 seconds increases or decreases the value quickly. the values shown in display will be automatically stored.

Time LED flashes once per second when the time counting begins.

3. UPPER FRONT, UPPER AND LOWER HEATING BACK SET DISPLAY, LED AND ADJUSTMENT

KEYS: Heating up the set with the arrow keys to enter and exit the circuit and how long seen the value set in indicators related resistance. related resistance as long as the resistance is activated LED lights. The display shows "0" appears when no resistance is not engaged, "10" resistance is seen constantly. value of 3 times during resistors set the indicator is activated, the remaining time in the resistance are disabled. Total test time (period) is 30 seconds. 4 For example, if the value entered, the resistance will remain active for 12 seconds, the LED will light up. During the 18 seconds will be disabled and the LED will flash.

4. TIMER KEY TO ACTIVE AND LED:

LEDs light when pressed, the time set begins to count down time. At the end of time, the device beeps.

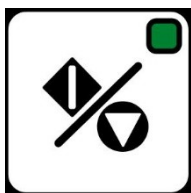
USING THE DEVICE



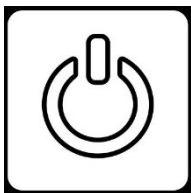
5. LIGHTING CONTROL KEY AND LED: LED lights when pressed, allows the lamp relay output. LED turns off when the button is pressed again, it does not relay outputs.



6. TURBO BUTTON AND LED: Key LED lights up when the key is pressed, all the resistance is started full operation is activated. Resistance indicator of "10" since the author and LEDs. key LED turns off when the key is pressed again. The preset resistance levels are seen in the display and the oven will continue to work according to the proportional value. When the Start button is pressed, the turbo is activated automatically. turbo is automatically deactivated when the setpoint is reached.



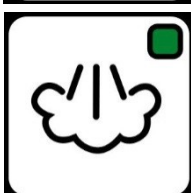
7. START / STOP KEY AND LED: LEDs light when pressed and switches to position START. Depending on the appliance starts to control temperature setpoint. Turbo automatically activated when the measured temperature is below the set value, resistors full works. setpoints are changed when the start position. According to the new setpoint temperature control set will continue to run. Measured temperature setpoint temperature until it reaches the relay is resistance remains and the temperature is set LED burns. Measuring the resistance value reaches the set value relay releases, the set temperature LED is off. Stop key to switch the device to position printed and LED turns off all the controls and relays are disabled. device faults All controls and switches to stop position will be canceled.



8. ON-OFF KEY AND LEDS: LED lights red button when the device is energized. the device is energized when the key is pressed. Key LED lights and green lights all the indicators. Pressing the button again deleted and key indicators are lit red.



9. STEAM ON-OF KEY AND LED: When the Steam On-Off key is pressed, the steam thermostat enters the circuit. As long as the thermostat is active, the On-Off button flashes. When the thermostat is deactivated, the device signals switch input. The On-Off button remains lit continuously.



10. STEAM BUTTON AND LED: Steam is ready. The steam valve exits as long as the steam key is held down. Otherwise the key will not sound and will sound an alarm. In case of failure, the control will be canceled.

HIDDEN FUNCTIONS:

The device is available in 6 hidden function parameter setting. These parameters are set as follows. Hidden function parameters from **Pr1 and Pr.2 only works when Turbo function active.**

Pr.1: When the Start button is pressed, the SET temperature turbo will enter standby to work out the difference (between 10°C to 90°C setting)

Pr.2: waiting time at turbo operation (setting from 1 min to 9 minutes)

Pr.3: Upper hysteresis setting (between -9°C setting with + 9°C)

PR.4: lower hysteresis setting (between 0°C and 9°C setting)

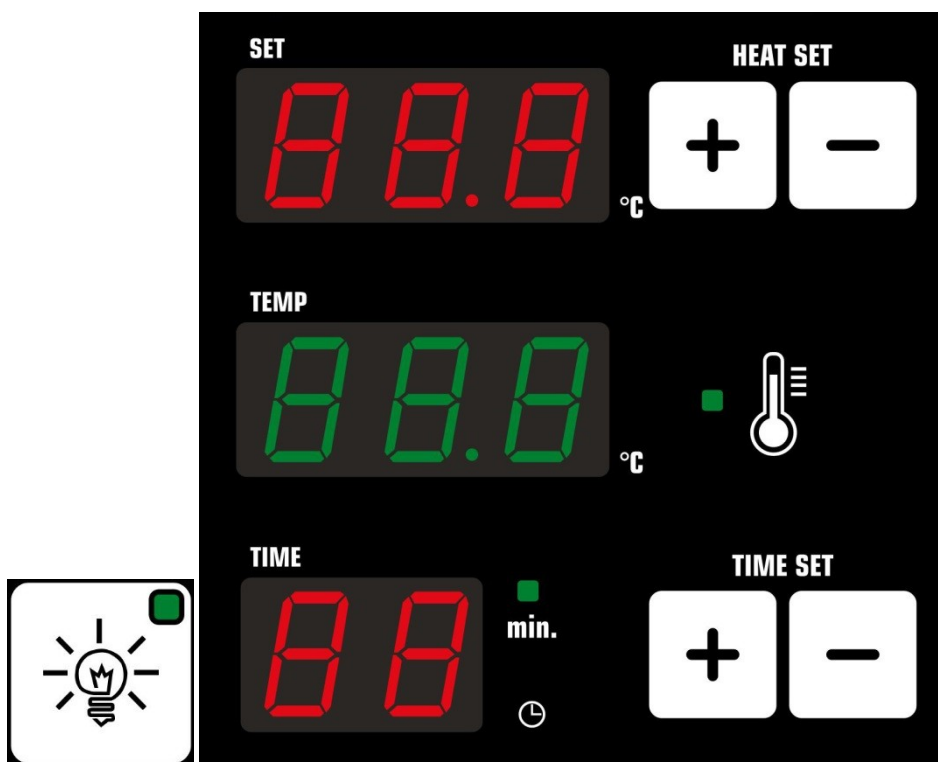
Pr.5 after setting there will be a few degrees of cooling fan (between 30°C and 100°C setting)

Pr.6: Buzzer passivation (0 or 1 adjustable)

USING THE DEVICE

Introduction hidden functions and settings:

To enter the secret function when the device is not in the start position lamp button is pressed for 3 seconds. Thus, the temperature parameter menu appears in the display. Blink Set the value to be set in the indicator flashes, the temperature indicator "Pr.1" writer. Auction Set temperature decrease key parameter value is set to help. If no adjustments are made within 10 seconds the device will automatically exit from the menu. Set Time, press the Up button to save the set parameter values to memory. Indicator does no flash remains solid. To set the parameter value by pressing the key again the next time Sets Auction, the parameter value starts to blink. Reducing Time Set button is pressed to exit the secret menu.



USING THE DEVICE

Pr.1: When the Start button is pressed, the measured temperature is below the setpoint value device operates in turbo mode automatically based on these parameters. All resistances measured temperature value is below the set temperature until the value in this parameter is active. If the measured temperature value according to the set temperature of the heater up high if the device is configured in this parameter value continues to work proportionally.

Pr.2 When the unit is now set in the turbo temperature measured temperature value is operating in automatic turbo mode Pr.1 resistance until the time set in this parameter is deactivated. Ultimately, according to the measured temperature value currently set heater temperature setpoint value is below the device continues to work proportionally. If this parameter is not desirable dwell time "0" is set.

Pr.3: Upper hysteresis setting with much of the measured temperature value below the set value (minus settings), or on how much (plus value adjustment) of the resistance are determined to be disabled.

PR.4: how much of the measured temperature values below the set value with lower hysteresis setting is determined to be engaged in the resistance.

Pr.5: The device is powered up (on location) The temperature is measured from the time off until the temperature is above the set value with this parameter, the cooling fan is consistently enforced.

Pr.6: Buzzer is determined whether or not the device in its active buzzer sound. Parameters "1" is set at the buzzer to buzzer is activated, "0" is set passive.

Örnek Çalışma:

Hidden function values Pr.1: 40°C - Pr.2: 9 minutes - PR.3: -5°C - PR.4: 0°C - Pr.5: 40°C and Pr.6: get one. Setpoint get at 180°C. Given the turbo automatically start the device will be disabled when the resistance 140°C to 40°C is engaged Pr.1 setting. 9 entered our resistance to the Pr.2 value will remain off for 9 minutes. Remove the turbo unit operation after 9 minutes, if the device is activated and the set resistance has not reached the set value and the set value will start according to the proportional control. In this study, all the upper heating elements is continued until the area was eder.üst hysteresis Hysteresis -5 °C to 175 °C oven entered is disabled. In this case the temperature inside the oven will automatically rise a few degrees and then begin to fall. When exiting the area resistance hysteresis again begin working as proportionally. Pr.5 40 is entered for the furnace temperature 40 ° past the cooling fan is automatically activated.

USING THE DEVICE

Oven control devices hidden parameters of the factory is as follows.

Pr.1: 40 ° C (temperature will remain off how much of a turbo under the set point in the first study)

Pr.2: 9 min (first study period to wait when the turbo is disabled)

Pr.3: -5°C (Upper hysteresis value)

PR.4: 0°C (lower hysteresis value)

Pr.5: 40°C (activating the cooling fan girecig oven temperature)

Pr.6: 1 (Buzzer on or off value. 1 buzzer on)

FAULTS and WARNINGS:

Er.1: Oven thermocouple (TC) is the open ends of the temperature indicator Er.1 writer. On the other intermittent buzzer and siren relay pull releases. All controls remain disabled. Failure resolved until the system fails. When the fault corrected setting must be done again.

Er.2: Oven temperature rises above the temperature indicator 400°C'n Er.2 writer. On the other intermittent buzzer and siren relay pull releases. All controls remain disabled. Failure resolved until the system fails. When the fault corrected setting must be done again.

Er.3: Limit thermostat (LT1) Er.3 writers on the temperature display when the input signal. On the other intermittent buzzer and siren relay pull releases. All controls remain disabled. Failure resolved until the system fails. When the fault corrected setting must be done again.

USING THE DEVICE

Instruction manual

The device before first use, the outer surface dipped in warm soapy water, cleaned with a cloth wrung.

Turn the power switch

Thermostat (250 ° C-300 ° C) set. (Green light will illuminate).

Products may occur when you run an odor originating from the first insulation and heating elements.

Therefore, all run before starting to use the thermostat to 250 ° C for **45 minutes** to bring the product as hollow.

Place pizza to be cooked after the flashing green light

Pizza cooking time is about 7-8 min at about 280 ° C.

You can check if cooked and cooked with the pizza burning lamp switch means.

Open the lid after cooking pizza and you get pizza. Close the lid again.

Although your cutting power to the furnace in order to save on a short waiting time during use, the thermostat take hold, bringing to 90 ° C. (If the oven's power is cut off due to the cold to go to a sufficient temperature for the next cooking process will result in a loss of time and energy.)

After daily use, turn off the power switch. Do the cleaning of the device after a power loss.

Operation of the device at temperatures between + 5 ° C to +40 ° C and maximum humidity of 65% is recommended that ambient conditions.

CLEANING AND MAINTENANCE

PERIODIC MAINTENANCE AND CLEANING

Consumers must be made by:

The device before first use and after each use and later (without electrical devices) starting from the complete outer surface of the platinum hair, wipe it with a sponge and liquid cleaning agent.

spirit of salt during cleaning, the elves etc. Do not use any cleaning material.

The LIFE DEVICES:

When using the recommended conditions, the lifetime of the device 10 years.

USING THE DEVICE



ATTENTION! : As described in the device's installation and use
Care should be taken to be installed and operated. Any failure
When faced with the situation of our call center
Do let me know.

When EQUIPMENT FAILURE RESPONSE ONLY POWERS
AUTHORIZED SERVICE Sgs Oven these. Authorized Service of
EXCEPT FOR A TECHNICAL STAFF MEMBER OR incompetent
THE UNIT INTERVENTION

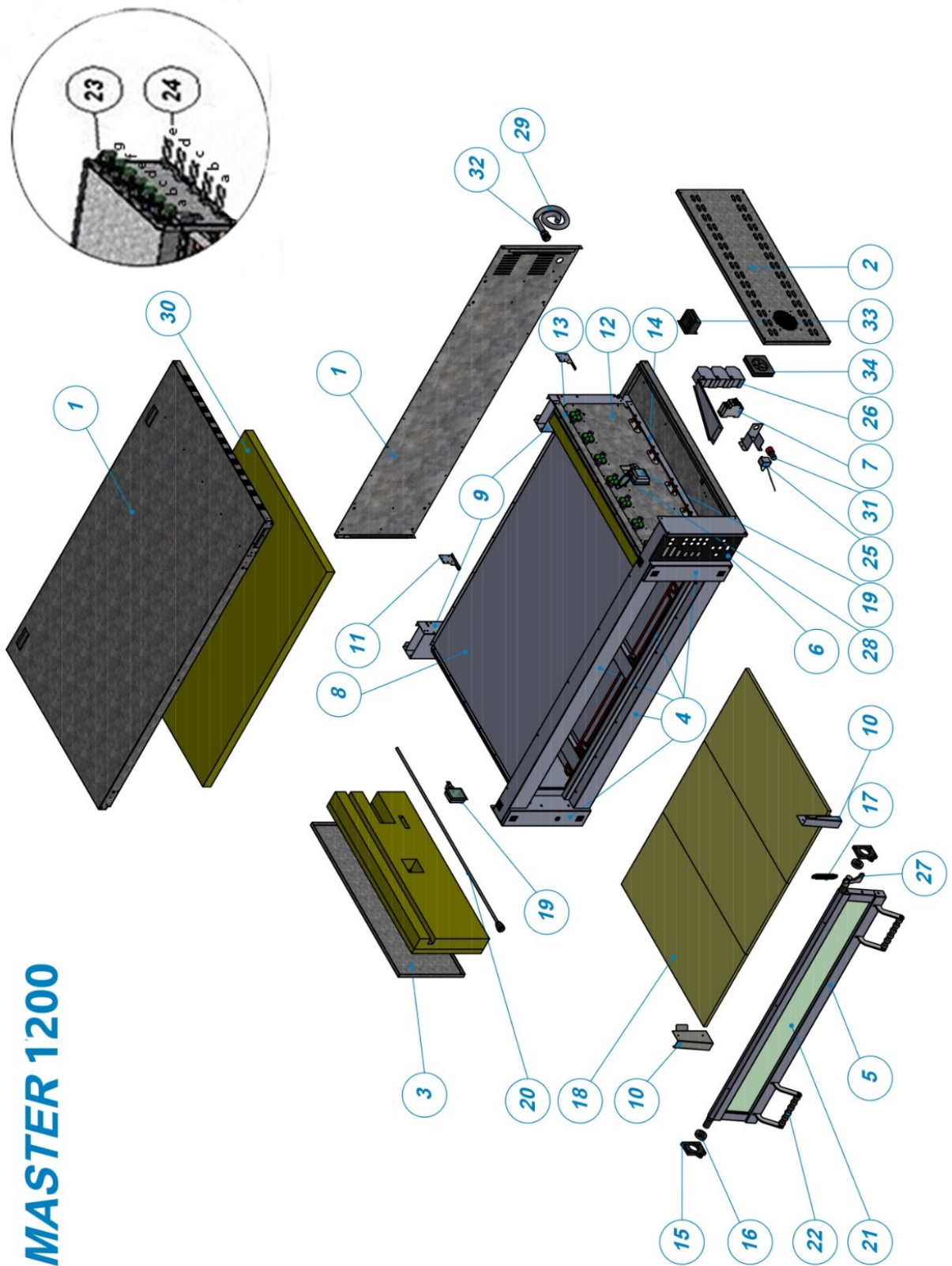
DEVICE WARRANTY WILL REMAIN OUTSIDE.

SO THE UNAUTHORIZED PERSONS
ABSOLUTELY NOT ALLOW THE DEVICE DO NOT INTERVENE.
THESE CONDITIONS SHALL BE LIABLE FOR ANY WAY MANUFACTURING
COMPANY. Our AUTHORIZED SERVICE DURING SERVICE
ORIGINAL SPARE PARTS WITHOUT ANY REASON
OFFER CAN NOT USE. IN ANY WAY
THIS IS NOT THE ORIGINAL EQUIPMENT FITTED WITH PARTS
DEVICE WARRANTY EXCLUDES.



- 1) The warranty period starts from the date of delivery and 2 years.
 - 2) the goods are under guarantee of our firm, including all parts.
 - 3) In case of defects within the warranty period, it added to the warranty period repair. The repair time is up to 20 business days. This period starts on the failure of the service station, in the absence of the service station, the property dealer, distributor, agent, representative, importer or manufacturer will start from the date of the notification from one-producers. Consumers malfunction notification by phone, fax, e-mail, not registered mail return receipt or similar means possible. However, the burden of proof belongs to the customer in case of dispute. Defection until the completion of the repair of the goods manufacturer-producer or importer can not be eliminated within 10 days, have to be allocated to the use of other consumer goods have similar characteristics.
 - 4) materials and labor needed within the warranty period, as well as in case of failure due to installation errors, labor costs, the cost of parts replaced or under any other name without demanding any fee will be repaired.
 - 5) Although we use the right consumer goods repair;
 - From the date of delivery to engaging in, as to stay within the warranty period, in a year; at least four times or manufacturer-producer and / or failed six times in addition to the warranty period set by importers, perpetuate the inability to take advantage of these faults malt,
- Exceeding the maximum time required for
- The -Company mania service station, service station order seller in the absence of, dealer, agency representatives importer or repairing the reporting malfunctions to edit one of the manufacturers and producers to determine whether a possible case of consumer goods free of alteration, refund or shame rate may demand a price reduction.
- 6) failure resulting in the use contrary to the instructions for use of the goods are out of warranty issues.
 - 7) for problems that may arise in connection with a guarantee certificate of the Ministry of Industry and Trade, and Consumer Protection of Competition may apply to the General Directorate.

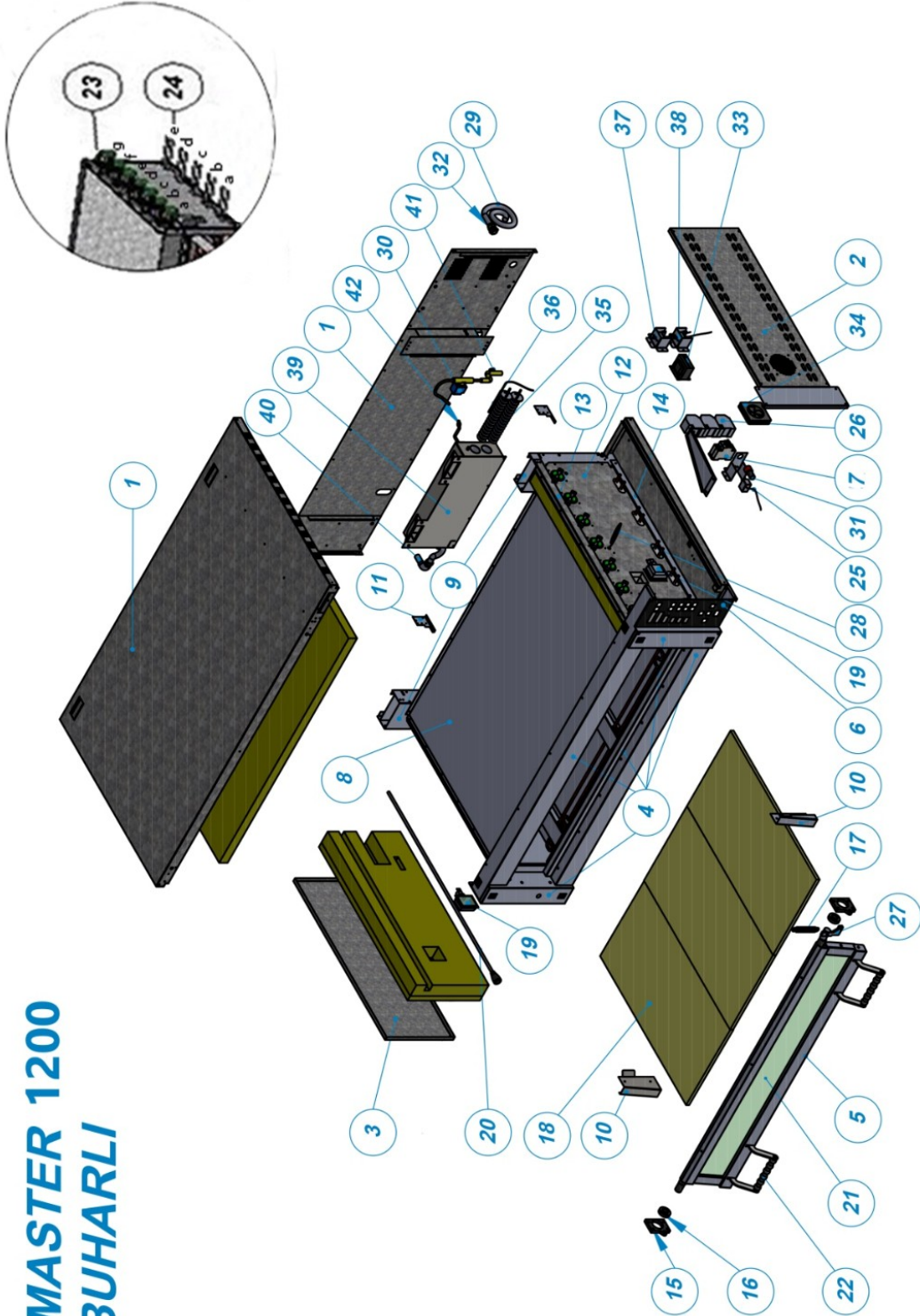
MASTER 1200



MULTI PURPOSE OVEN SPARE PART LIST (*MASTER SERIE*)

CODE	PART NAME
1	MAIN BODY
2	RIGHT SIDE COVER
3	LEFT SIDE COVER
4	OVEN FRONT FRAME
5	OVEN DOOR
6	ELECTRONIC PANEL
7	COVER CONNECTION APPARATUS
8	DECK BODY
9	CHIMNEY
10	LAMP HIDER
11	DECK FOOT
12	ELECTRICAL PANEL
13	ELECTRICAL PANEL INSTALLATION PROFILE
14	ELECTRICAL PANEL INSTALLATION PROFILE
15	ROLLER PLACE
16	ROLLER
17	DOOR SPRING
18	COOKING STONE
19	LAMP
20	CHIMNEY MECHANISM
21	SURVEILLANCE GLASS
22	DOOR HANDLE
23	TOP RESISTANCE GROUP
24	LOWER RESISTANCE GROUP
25	THERMOSTAT
26	CONTACTOR
27	OVEN DOOR SPRING HOLDER
28	THERMOCOUPLES
29	POWER CABLE
30	SELENOID WALF
31	HOOTER
32	SUPPLY CABLE UNION
33	TRANSFORMER
34	FAN
35	FUSE

MASTER 1200 BUHARLI



MULTI PURPOSE OVEN SPARE PART LIST (*MASTER SERIE*)

CODE	PART NAME	
1	MAIN BODY	
2	RIGHT SIDE COVER	
3	LEFT SIDE COVER	
4	OVEN FRONT FRAME	
5	OVEN DOOR	
6	ELECTRONIC PANEL	
7	ISOLATION	
8	DECK BODY	
9	CHIMNEY	
10	LAMP HIDER	
11	DECK FOOT	
12	ELECTRICAL PANEL	
13	ELECTRICAL PANEL INSTALLATION PROFILE	
14	ELECTRICAL PANEL INSTALLATION PROFILE	
15	ROLLER PLACE	
16	ROLLER	
17	DOOR SPRING	
18	COOKING STONE	
19	LAMP	
20	CHIMNEY MECHANISM	
21	SURVEILLANCE GLASS	
22	DOOR HANDLE	
23	TOP RESISTANCE GROUP	
24	LOWER RESISTANCE GROUP	ZIGZAG RESISTANCE
		U RESISTANCE
25	THERMOSTAT	
26	CONTACTOR	
27	OVEN DOOR SPRING HOLDER	
28	THERMOCOUPLE	
29	POWER CABLE	
30	SELENOID WALF	
31	SIREN	
32	POWER CABLE UNION	
33	TRANSFORMER	
34	FAN	
35	FUSE	
36	STEAM BOILER THERMOCOUPLE	
37	STATIONARY THERMOSTAT	
38	SAFETY THERMOSTAT	
39	STEAM BOILER	
40	WASTE WATER PIPE	
41	MINI BALL VALVE	
42	STEAM BOILER RESITANCE	
43	STEAM BOILER - WATER SPRAYER	



DECLARATION OF CONFORMITY

COMPANY NAME : SGS MUTFAK EKİPMANLARI İTH.İHR.TUR.GIDA PAZ. ELEK. SER. HİZ. SAN. ve LTD. ŞTİ.

ADDRESS : Cumhuriyet Mah Balkan Cad No: 20 Yazıbaşı Torbalı İzmir Türkiye

PHONE : 0090 232 2575233 - 2575223 - 2576922 - 2575836

FAKS : 0090 232 2575303

WEB : <http://www.sgsoven.com>

PRODUCT : Patisserie Oven

MODEL : MT 1200 - MK 1200T - MD 1200 1 - MD 1200 2- MK 1200D - ME 1200 3 - ME 1200 - MT 800 - MT 800T - MD 800 1 - MD 800 2 - MK 800D - ME 800

TEST STATEMENT NO : 20140528/001

HARMONIZED STANDARDS : EN 60335-2-36, EN 60335-1

APPLIED DIRECTIVES : Low Voltage Directive (LVD) 2014/35/EU

We declare as of SGS MUTFAK EKİPMANLARI LTD. ŞTİ. PATISSERIE OVEN produced by us is in compliance with the above relevant Council of Europe New Approach Directives and Harmonized EN standards that given. We accept all the responsibilities associated with these products.

PLACE / DATE : İZMİR / 13.10.2014

GENERAL MANAGER:

SEBAHTIN YASHAROV YUZEIROV

/

RUŞEN AKSU

S.G.S. MUTFAK EKİPMANLARI İTH. İHR.
TURİZM GIDA PAZ. ELEKTRONİK
SERVIS HİZM. SAN. TİC. LTD. ŞTİ.
Yazıbaşı Mah. Balkan Cad. No: 26 Torbalı/İZMİR
Tic. Sic. No: 273262 T.C. Mers. No: 08710010000000000000
Tic. Sic. No: 273262 T.C. Mers. No: 08710010000000000000



SGS MUTFAK EKIPMANLARI LTD. STI.

Cumhuriyet Mah. Balkan Cad. No:20

Yazıbaşı-Torbalı/İZMİR-TÜRKİYE

Tel: +90 232 257 52 23

Fax: +90 232 257 53 03

e-mail: info@sgsoven.com

www.sgsoven.com