



**PRODUCT  
CODE  
KM 40 DE  
KM 40 E**



## **CREPE MACHINE USER MANUAL**

# CONTENTS

---

NO	CONDITIONS
1	COVER
2	CONTENTS
3	PRESENTATION
4	TECHNICAL SPECIFICATIONS
5	GENERAL MEASUREMENTS
6	ELECTRICITY SCHEME
7	WARNING SIGNS
8	PRODUCT LABEL INFORMATION
9	SAFETY RELATED DETAILS
10	TRANSPORTATION AND FLOOR REPLACEMENT
11-12	USER INSTRUCTION, CLEANING AND MAINTENANCE
13-14	WARRANTY CONDITIONS
15-17	EXPLODED PICTURE
18	CE DECLARATION

# PRESENTATION

---

Dear user,

We thank you for choosing our device and for your confidence in our company. Our appliances are used in industrial kitchens in 60 countries together with you. Our device is manufactured in accordance with international standards.

We strongly advise you to read the user manual carefully and read your user manual so that you can get the proper yield from your device and use it for a long time. Before calling our service, we ask you to consider the following warning.

---

☞ Please read the manual carefully before installing and operating the device, so that the user can read it. If you operate the machine without reading the manual, the warranty will be void.

☞ Please read carefully the guide that provides information on the installation, use and maintenance of the product you are purchasing. Ensure that the electrical installation of the appliance is prepared in accordance with legal regulations, without having our authorized service personnel come to install the appliance.

☞ If you are hesitating and do not understand the closest  
Contact your authorized service provider for information.



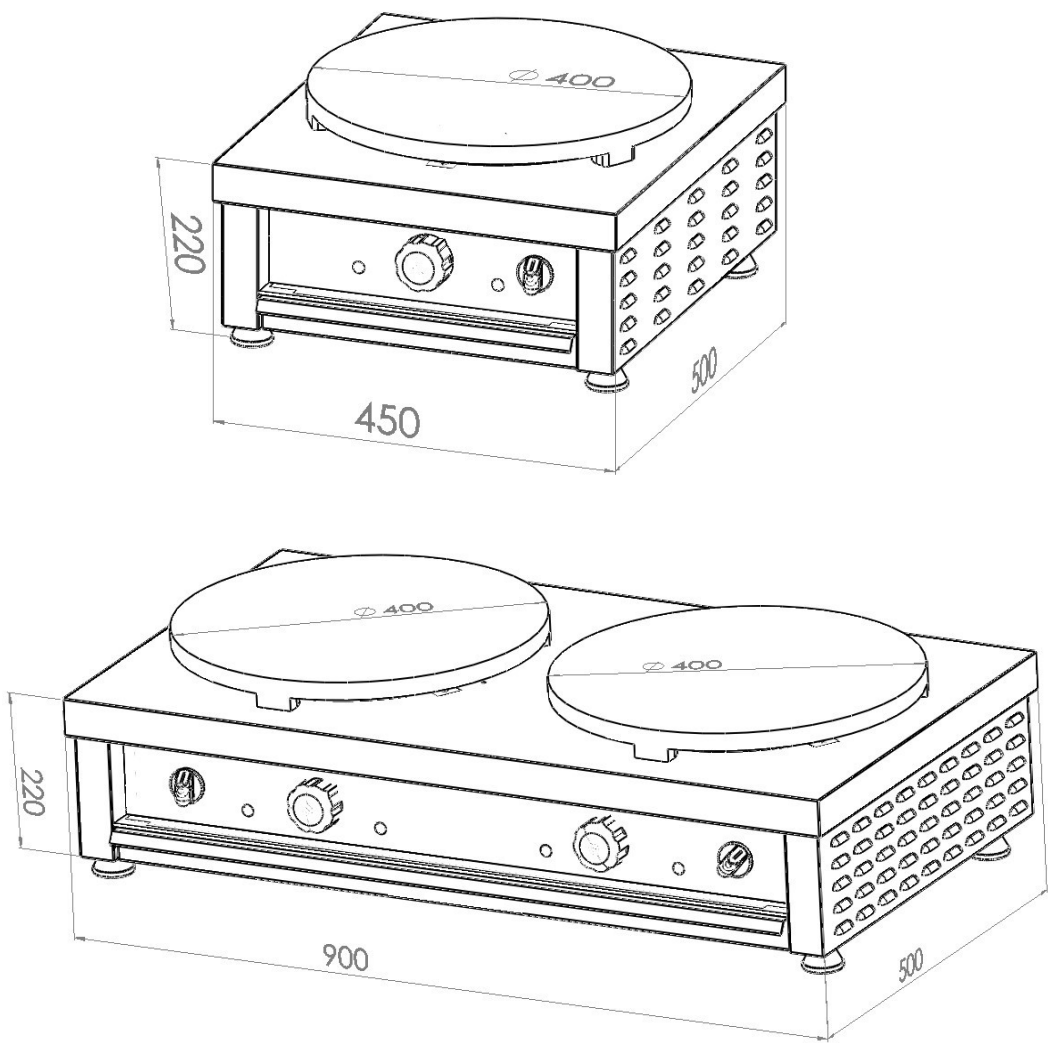
☞ Costs if the service element called for assembly is held and  
We remind you that the waiting fee for each hour will be invoiced to your party.

☞ We wish you the best yield from our product ...

# TECHNICAL SPECIFICATIONS

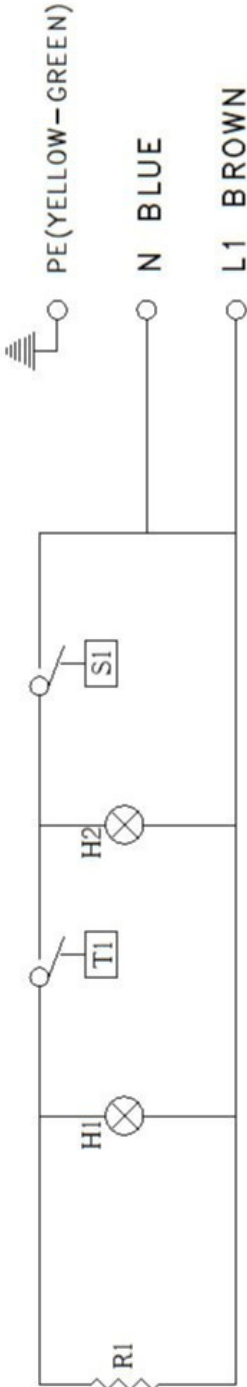
MODEL	KM 40 E	KM 40 DE
TOTAL ELECTRIC POWER (KW)	3	3+3
ELECTRIC SUPPLY VOLTAGE (V)	230	230
OPERATING FREQUENCY (Hz)	50	50
NOMINAL CURRENT	14	27
FEED WIRING mm (H07 RNF)	3 x 1,5	3 x 1,5
MAX. MIN OPERATING TEMPERATURE OC	280-270	280-270
COOKING SURFACE	CAST IRON	CAST IRON
THERMOSTAT OPERATING RANGE OC	50-300	50-300
EXTERNAL MEASUREMENTS (cm)	45x50x22	90x50x22
NET WEIGHT (Kg)	20	37
MAX. SLOPE	5°	5°
CLASS	1	1
PROTECTION CLASS	IP 20	IP 20
USAGE AREA	Ø 40	Ø 40 x 2

# GENERAL MEASUREMENTS



NO	FRONT	SIDE	MOST	DIAME TER
KM 40 E (cm)	45	22	50	40
KM 40 DE (cm)	90	22	50	40

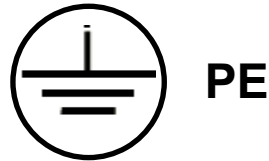
# ELECTRICITY SCHEME

KM 40 E - DE		230 /400 V 2F + N	
			
NO		EXPLANATION	
R1		Rezistans (1500 w)	
T1		Thermostat (0-300° C)	
H1		Thermostat Control Lamb	
H2		On Off Control L amb	
S1		On Off Thermostat Button	

# WARNING SIGNS



**PROTECTION SOIL**



**NETWORK EARTHQUAKE**



**ELECTRICITY**



**EXCELLENT TEMPERATURE**

## **ELECTRICAL CONNECTION VALUES**

**230V / 50/60 Hz**

Voltage: 230 V  
Network Connection: 230 V

Frekans: 50/60 Hz.



# PRODUCT LABEL INFORMATION

**KREP MAKİNESİ / CREPE MACHINE**

<b>SGS</b>		TEL : +90 (0232) 257 52 23-33 FAX : +90 (0232) 257 53 03							
MODEL ( Type )	TARİH (Date)	<b>CE</b>							
KM 40 E	06.2018								
SERİ NO (Serial)	AĞIRLIK (Weight)	<b>CONNECTING TABLE</b>							
	21 Kg								
GÜÇ (Power)	VOLTAJ / (Voltage)	<table style="width: 100%; border: none;"> <tr> <td>BROWN</td> <td>L1</td> </tr> <tr> <td>BLUE</td> <td>N</td> </tr> <tr> <td>YELLOW/GREEN</td> <td>—</td> </tr> </table>		BROWN	L1	BLUE	N	YELLOW/GREEN	—
BROWN	L1								
BLUE	N								
YELLOW/GREEN	—								
3 KW	210-230V 1F + N								
FREKANS(Frequency)	IP								
50-60 Hz	20								
AKIM / (Courrent)	SINIF (Class)								
14 A	1								

SGS MUTFAK EKİPMANLARI LTD.ŞTİ / MADE IN TURKEY  
Cumhuriyet Mah.Balkan Cad.No 20 Yazıbaşı / TORBALI / İZMİR [www.sgsoven.com](http://www.sgsoven.com)  
info@sgsoven.com

**KREP MAKİNESİ / CREPE MACHINE**

<b>SGS</b>		TEL : +90 (0232) 257 52 23-33 FAX : +90 (0232) 257 53 03							
MODEL ( Type )	TARİH (Date)	<b>CE</b>							
KM 40 DE	06.2018								
SERİ NO (Serial)	AĞIRLIK (Weight)	<b>CONNECTING TABLE</b>							
	39 Kg								
GÜÇ (Power)	VOLTAJ / (Voltage)	<table style="width: 100%; border: none;"> <tr> <td>BROWN</td> <td>L1</td> </tr> <tr> <td>BLUE</td> <td>N</td> </tr> <tr> <td>YELLOW/GREEN</td> <td>—</td> </tr> </table>		BROWN	L1	BLUE	N	YELLOW/GREEN	—
BROWN	L1								
BLUE	N								
YELLOW/GREEN	—								
3 + 3 KW	2x210-230 V 1F + N								
FREKANS(Frequency)	IP								
50-60 Hz	20								
AKIM / (Courrent)	SINIF (Class)								
14A + 14A ( 28A )	1								

SGS MUTFAK EKİPMANLARI LTD.ŞTİ / MADE IN TURKEY  
Cumhuriyet Mah.Balkan Cad.No 20 Yazıbaşı / TORBALI / İZMİR [www.sgsoven.com](http://www.sgsoven.com)  
info@sgsoven.com

**KREP MAKİNESİ / CREPE MACHINE**

<b>SGS</b>		TEL : +90 (0232) 257 52 23-33 FAX : +90 (0232) 257 53 03									
MODEL ( Type )	TARİH (Date)	<b>CE</b>									
KM 40 DE	02.2017										
SERİ NO (Serial)	AĞIRLIK (Weight)	<b>CONNECTING TABLE</b>									
	39 Kg										
GÜÇ (Power)	VOLTAJ / (Voltage)	<table style="width: 100%; border: none;"> <tr> <td>BROWN</td> <td>L1</td> </tr> <tr> <td>BLACK</td> <td>L2</td> </tr> <tr> <td>BLUE</td> <td>N</td> </tr> <tr> <td>YELLOW/GREEN</td> <td>—</td> </tr> </table>		BROWN	L1	BLACK	L2	BLUE	N	YELLOW/GREEN	—
BROWN	L1										
BLACK	L2										
BLUE	N										
YELLOW/GREEN	—										
3 + 3 KW	380 V 2F + N										
FREKANS(Frequency)	IP										
50-60 Hz	20										
AKIM / (Courrent)	SINIF (Class)										
14A + 14A ( 28A )	1										

SGS MUTFAK EKİPMANLARI LTD.ŞTİ / MADE IN TURKEY  
Cumhuriyet Mah.Balkan Cad.No 20 Yazıbaşı / TORBALI / İZMİR [www.sgsoven.com](http://www.sgsoven.com)  
info@sgsoven.com



# SAFETY DETAILS

✎ Never use any kind of solid liquid materials (clothes, alcohol and its derivatives, petro - chemical products, wood and plastic materials, curtains etc) that can be burned in the work area.

✎ The appliance must be operated under the hood

✎ You can use our devices side by side with our other products in the same shelf.

✎ This device must be installed in accordance with current regulations and should only be used in a well-ventilated place. Consult the instructions before installation and use of the device.

✎ The device must not be intervened except the manufacturer or its authorized service.

✎ Use a fire extinguisher by switching off the gas valves and electrical switches in case of fire, flame, etc. in the area where the appliance is used for any reason. Never use water to extinguish the flame.

✎ Do not clean with pressurized water.

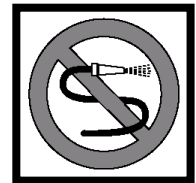
✎ The appliance is intended for industrial purposes and should only be used by trained personnel.

✎ Use the fire extinguisher by shutting off the gas valves and the electrical condition of the device when there is no panic in the area where the device is used for any reason such as fire, flame burst. Never use water to extinguish the flame.

When the appliance is started, the exposed casting on the surface is hot and must not be touched.

✎ If the supply cord is damaged in type Y connected devices, this cord shall be replaced by the manufacturer or its service agent or a similarly qualified personnel in order to prevent a hazardous situation

✎ This device is not intended for use by persons with physical, sensory or mental capabilities (including children) or persons with inadequate experience or knowledge, unless supervision and management are concerned with the use of the device by a person responsible for the safety of the device



# TRANSPORTATION AND FLOOR REPLACEMENT

---

The mains connection must be disconnected before transport.

The device can be carried by hand.

Do not strike and drop the device while it is lifting.

Where the appliance is to be installed, the feet of the counter should be adjusted and the appliance should be able to work on a level scale.

The electrical connection of the device is not controlled by a qualified electrician and must be connected to the fuse at an altitude of 1800 mm.

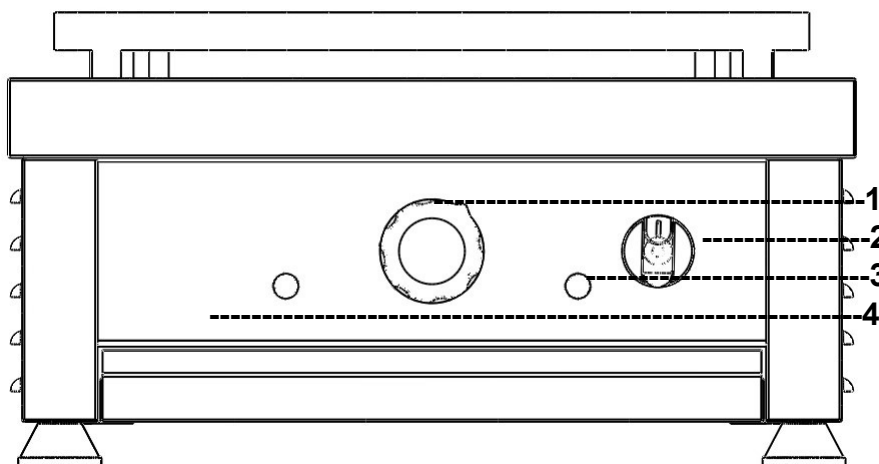
The receptacles to be used must be grounded by connecting to the earthing bar on the nearest panel. For Panoda single models, 32A auto fuse must be used for 16A double models.

# USER INSTRUCTIONS

## CONTROL BOARD

---

**ATTENTION ! : DO NOT OPERATE DEPENDING ON YOUR APPLIANCE WITH SOIL RULE**



1. Temperature control switch
2. Thermostat on-off
3. Thermostat led control
4. Thermostat led control

## USER INSTRUCTIONS

Instruction manual

Wear a grounded prize.

Bring the thermostat knob to the desired degree.

Switch on the on / off switch of the device.

Start cooking after your appliance has warmed up.

After the cooking process is over, switch off the appliance on / off.

Remove from the plug socket..

# USER INSTRUCTIONS

---

Contact your authorized service center for connection and assembly of the product. Damage that may occur during connection and installation other than authorized service will be excluded from the warranty.

## CLEANING AND MAINTENANCE

---

### PERIODIC MAINTENANCE AND CLEANING

It should be done by the consumer:

Cut off the electrical connection before cleaning the machine.

After the machine has cooled down, perform cleaning and maintenance procedures.

Make the necessary cleaning of the machine without using soft sponge and abrasive chemicals.

Do not clean or service with pouring water.

Always observe the warning and warning labels on the appliance.

Fault reasons:

Do not interfere with the machine during electrical and other disturbances and contact the technical service immediately. Do not intervene in the machine until the technical service arrives.

### APPLICATION LIFE:

**When used under recommended conditions, the device has a lifetime of 10 years.**

# WARRANTY

---



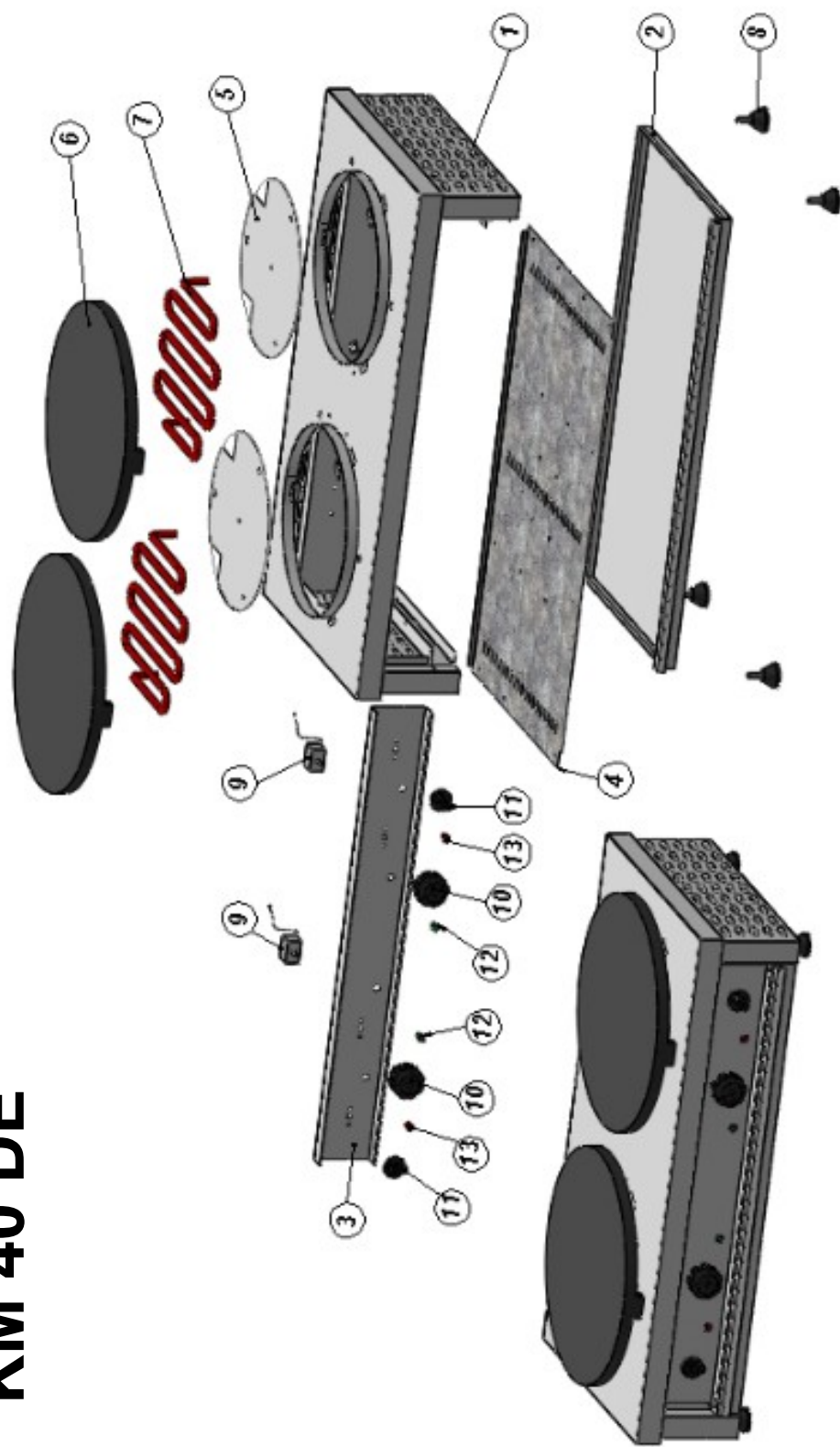
**ATTENTION! : As described in the installation and use of the device**  
**Care should be taken to establish and operate it. Any failure**  
**If you compare the status to our call center**  
**Please let us know.**

**INTERFERENCE AUTHORIZATION ON DEVICE FAILURE ONLY**  
**RESPONSIBILITIES SERVICE OF AUTHORITIES. AUTHORIZED SERVICES**  
**A TECHNICAL ELEMENTARY OR NON-STOPPED PERSONNEL**  
**DEVICE INTERVENTION**  
**THE DEVICE HAS EXCEPT OF THE WARRANTY SCOPE.**  
**NON-AUTHORIZED PERSONS WITH THIS REASON**  
**YOU MUST NOT ALLOW THE PERMISSION TO RESPECT THE DEVICE.**  
**IN NO EVENT WILL THESE PRODUCER COMPANY BE RESPONSIBLE FOR**  
**THE RESPONSIBILITY. AUTHORIZED SERVICES DURING SERVICE**  
**ORIGINAL SPARE PARTS WITH ANY REASON**  
**USE IS NOT OFFERED. ANY SHAPE**  
**THESE ORIGINAL PARTS INSTALLED ON THE DEVICE**  
**THE DEVICE DISCLAIMS WARRANTY.**



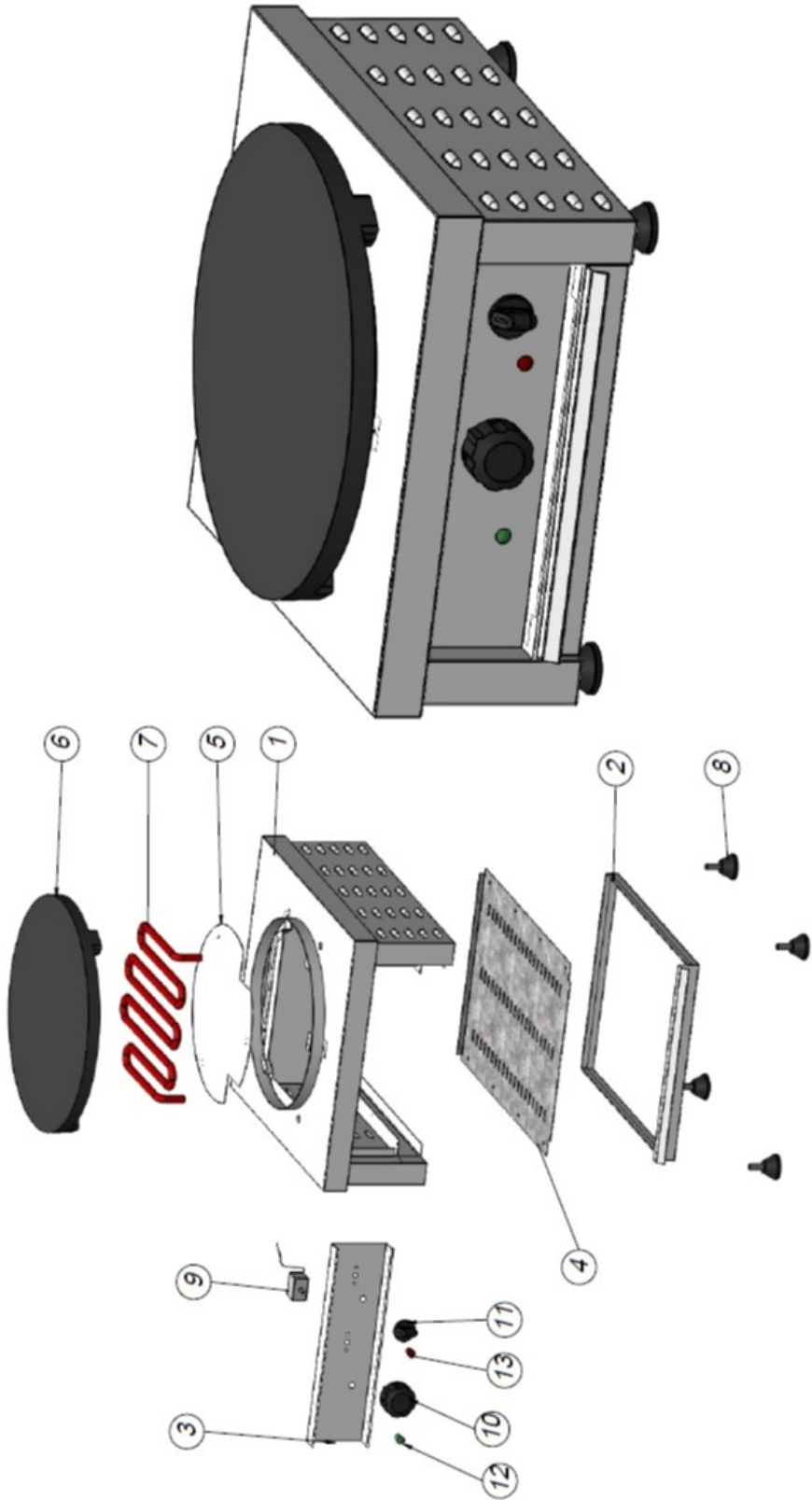
- 1-) Warranty period starts from the delivery date of the goods and is 2 years.
- 2-) All parts of the product are guaranteed by our company.
- 3-) In case of malfunction within the warranty period, the period of repair will be added to the warranty period. The repair period of the goods is maximum 20 working days. This period shall commence from the date of notification of the fault of the goods to the service station or, in the absence of the service station, to the seller, dealer, agent, representative, importer or manufacturer of the goods. It is possible for the consumer to make a fault report by telephone, fax, e-mail, registered mail or similar. In case of disagreement, however, the obligation of proof belongs to the consumer. If the malfunction can not be rectified within 10 days, the manufacturer-producer or importer has to allocate to the use of another consumer with similar characteristics until the repair of the goods is completed.
- 4-) In case of malfunction due to material and workmanship or assembly errors in the warranty period of the goods, the repair will be done without any charge under the name of the cost of the workmanship, the changed parts price or any other name.
- 5-) Despite the consumer's right to repair;
  - The date from the date of delivery to the supplier, within one year, At least four times, or six times within the warranty period specified by the manufacturer, the manufacturer and / or the importer, as well as the continuity of failure of these defects from the property,
  - The maximum time required for the master to be exceeded,
  - If the service station of the company does not have a service station, it may request a reduction of the defective goods by the seller, dealer, agency representative, importer or one of the manufacturer-producers.
- 6-) Defects arising from unauthorized use in the manual of the goods are not covered by the guarantee.
- 7-) For the problems that may arise in connection with the Warranty Certificate, the Ministry of Industry and Trade may apply to the Consumer and the General Directorate of Competition Protection.

# KM 40 DE





# KM 40 E



# SPARE PARTS LIST

---

## CREPE MACHINE SPARE PART LIST KM40E/KM40DE

CODE	PART NAME
1	BODY
2	DRAWER
3	CONTROL PANEL
4	VENTILATION SHEET
5	RESISTANCE HOLDER
6	CAST PLATE
7	RESISTANCE
8	FOOT
9	THERMOSTAT
10	THERMOSTAT BUTTON
11	ON-OFF SWITCH
12	THERMOSTAT CONTROL LED
13	ON-OFF CONTROL LED



## DECLARATION OF CONFORMITY

**COMPANY NAME** : SGS MUTFAK EKİPMANLARI İTH.İHR.TUR.GIDA PAZ. ELEK. SER. HİZ.  
SAN. ve LTD. ŞTİ.

**ADDRESS** : Cumhuriyet Mah Balkan Cad No: 20 Yazıbaşı Torbalı İzmir Türkiye

**PHONE** : 0090 232 2575233 - 2575223 - 2576922 - 2575836

**FAKS** : 0090 232 2575303

**WEB** : <http://www.sgsoven.com>

**PRODUCT** : Crepe Mach

**MODEL** : KM40 ; KM40DE

**TEST STATEMENT NO** : CMK201303-02

**HARMONIZED STANDARDS** : TS EN ISO 12100:2010; TS EN 60204-1:2008

**APPLIED DIRECTIVES** : 2006/42/EC MACHINE SAFETY DIRECTIVE - ANNEX I

We declare as of SGS MUTFAK EKİPMANLARI LTD. ŞTİ. CREPE MACH produced by us is in compliance with the above relevant Council of Europe New Approach Directives and Harmonized EN standards that given. We accept all the responsibilities associated with these products.

**PLACE / DATE** : İZMİR / 20.10.2010

**GENERAL MANAGER:**

SEBAHTIN YASHAROV YUZEIROV

/ RUŞEN AKSU

**S.G.S. MUTFAK EKİPMANLARI İTH. İHR.**  
**TURİZM GIDA PAZ. ELEKTRONİK**  
**SERVIS HİZM. SAN. TIC. LTD. ŞTİ.**  
Yazıbaşı Mah. Balkan Cad. No: 20 Torbalı/İZMİR  
Tel: 0232 257 52 23 Fax: 0232 257 53 03  
TORBALI V.D. 735 028 9108



**SGS MUTFAK EKIPMANLARI LTD. STI.**

Cumhuriyet Mah. Balkan Cad. No:20

Yazıbaşı-Torbalı/İZMİR-TÜRKİYE

Tel: +90 232 257 52 23

Fax: +90 232 257 53 03

e-mail: [info@sgsoven.com](mailto:info@sgsoven.com)

[www.sgsoven.com](http://www.sgsoven.com)