



**PRODUCT  
CODE**  
ED 01  
EDK 01  
EDS 01



## **BREAD SLICER MACHINE USER MANUAL**

# CONTENTS

---

PAGE NO	CONDITIONS
1	COVER
2	CONTENTS
3	PRESENTATION
4	TECHNICAL SPECIFICATIONS
5	GENERAL MEASUREMENTS
6	ELECTRIC SCHEME
7	WARNING SIGNS
8	PRODUCT LABEL INFORMATION
9	SAFETY RELATED DETAILS
15	TRANSPORTATION AND FLOOR REPLACEMENT
11-13	USING THE DEVICE, CLEANING AND MAINTENANCE
14	WARRANTY CONDITIONS
15-18	EXPLOIT VIEWS, SPARE PART LISTS
19	CE DECLARATION

# PRESENTATION

---

Dear user,

We thank you for choosing our device and for your confidence in our company. Our devices are used in industrial kitchens in 60 countries together with you. Our device is manufactured in accordance with international standards.

We strongly advise that you read the user manual carefully and that you read your user manual so that you can get the proper efficiency from your device and use it for a long time. Before you call our service, we ask you to consider the following warning.

---

## SGS OVEN

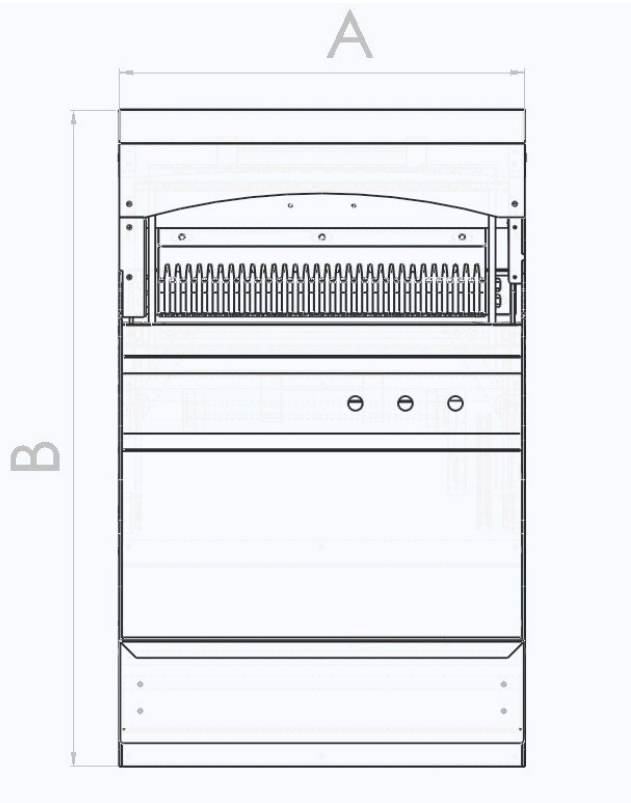
- ☞ Please read the manual carefully before installing and operating the device, so that the users of the device do not read it. If you operate the machine without reading the manual, the warranty will be void.
- ☞ Ensure that the manual that provides information on installation, use and maintenance of the product you are purchasing should be read carefully. Ensure that the installation of the appliance is carried out by qualified personnel in accordance with legal regulations, without having our authorized service personnel come to install the appliance.
- ☞ If you are hesitating and do not understand the closest  
Contact your authorized service provider for information.
- ☞ If the service element called for assembly is put on hold,  
We remind you that the waiting fee for each hour will be invoiced to your party.
- ☞ We wish you the best yield from our product ...



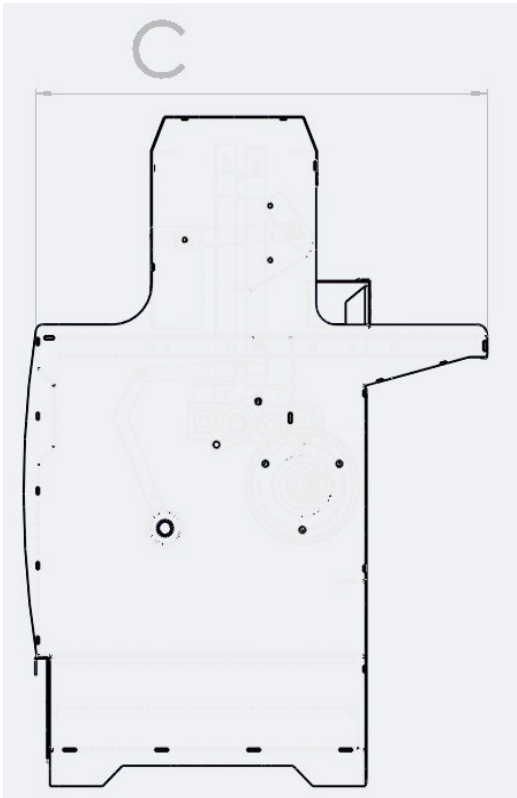
# TECHNICAL SPECIFICATIONS

MODEL	EDK	ED 01	EDS
EXTERNAL MEASUREMENTS (cm)	65 x 82 x 110	65 x 72 x 110	65x65x70
TOTAL ELECTRIC POWER (KW)	0,37	0,37	0,37
ELECTRIC SUPPLY VOLTAGE (V)	220	220	220
OPERATING FREQUENCY (Hz)	50/60	50/60	50/60
SLICING RANGE	13-16-20	10-13-16-20	10-13-16
SUPPLY WIRELESS mm (H07 RNF)	3 x 1,5	3 x 1,5	3x1,5
PROTECTION CLASS	IP 20	IP 20	IP 20
NET WEIGHT (KG)	125	120	110
NOMINAL FLOW (A)	2	2	2
CAPACITY	HOURS 500 BREAD	HOURS 500 BREAD	HOURS 500 BREAD

# GENERAL MEASUREMENTS



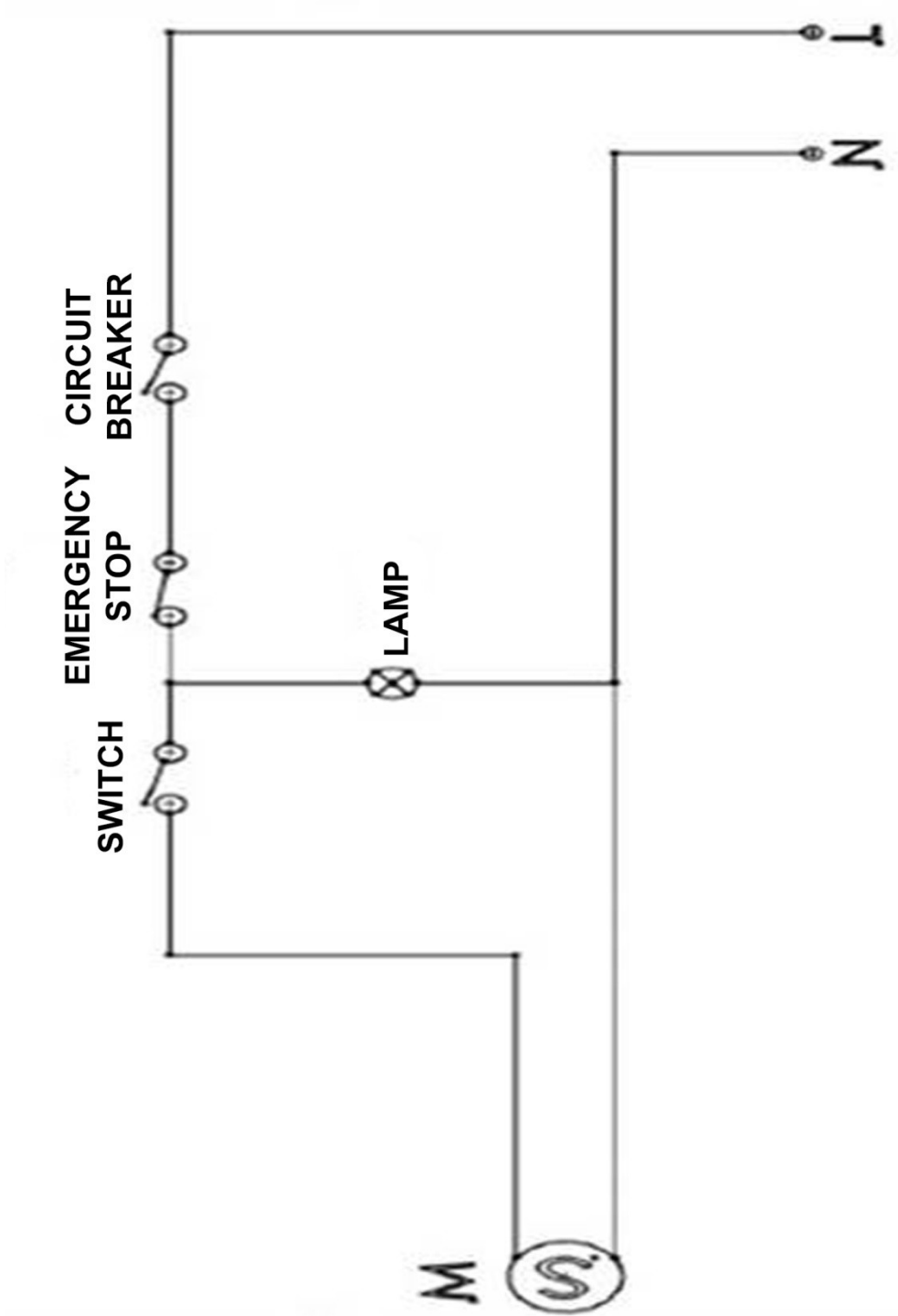
Front view



Side view

CODE	A	B	C
EDK	65	110	82
ED 01	65	110	72
EDS	65	65	70

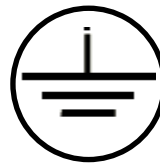
# ELECTRIC SCHEME



# WARNING SIGNS



**PROTECTION SOIL**



**PE**

**NETWORK EARTHING**



**ELECTRICITY**



**OVERHEATING TEMPERATURE**

## **ELECTRICAL CONNECTION VALUES**

**220V -240V / 50/60 Hz**

Voltage: 220 V - 240 V  
Network Connection: 220-240 V  
Earthing Line  
Frequency: 50/60 Hz.

# PRODUCT LABEL INFORMATION

**EKMEK DİLİMLEME MAKİNESİ / BREAD SLICER WITH BENCH**

<b>SGS</b> 	TEL : +90 (0232) 257 52 23-33 FAX : +90 (0232) 257 53 03
<b>MODEL ( Type)</b> ED 01 / 13 MM	<b>TARİH (Date)</b> 06.2018
<b>SERİ NO (Serial)</b>	<b>AĞIRLIK (Weight)</b> 130 Kg
<b>GÜÇ (Power)</b> 0,37 KW	<b>VOLTAJ (Voltage)</b> 220 V
<b>FREKANS(Frequency)</b> 50-60 Hz	<b>DEVİR (Period)</b> 1400

SGS MUTFAK EKİPMANLARI LTD.ŞTİ. / MADE IN TURKEY  
Cumhuriyet Mah.Balkan Cad.No 20 Yazıbaşı / TORBALI / İZMİR [www.sgsoven.com](http://www.sgsoven.com)  
[info@sgsoven.com](mailto:info@sgsoven.com)

**EKMEK DİLİMLEME MAKİNESİ / BREAD SLICE WITH BENCH**

<b>SGS</b> 	TEL : +90 (0232) 257 52 23-33 FAX : +90 (0232) 257 53 03
<b>MODEL ( Type)</b> EDS 01 / 16 MM	<b>TARİH (Date)</b> 06.2018
<b>SERİ NO (Serial)</b>	<b>AĞIRLIK (Weight)</b> 107 Kg
<b>GÜÇ (Power)</b> 0,37 KW	<b>VOLTAJ (Voltage)</b> 220 V
<b>FREKANS(Frequency)</b> 50-60 Hz	<b>DEVİR (Period)</b> 1400

SGS MUTFAK EKİPMANLARI LTD.ŞTİ / MADE IN TURKEY  
Cumhuriyet Mah.Balkan Cad.No 20 Yazıbaşı / TORBALI / İZMİR [www.sgsoven.com](http://www.sgsoven.com)  
[info@sgsoven.com](mailto:info@sgsoven.com)



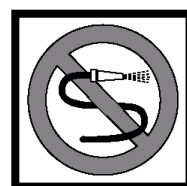
# SAFETY DETAILS

---

☞ All kinds of solid liquid materials (clothes, alcohol and derivatives, petro - chemical products, wood and plastic materials, curtains etc) that can be burned in the area where the device is working should never be kept.



☞ Do not clean with pressurized water.



☞ You can use our devices side by side with our other products on the same shelf.

☞ This device must be installed in accordance with the current regulations and should only be used in a well-ventilated place. Consult the instructions before installation and use of the device.



☞ The device must not be intervened except by the manufacturer or its authorized service.



☞ Use fire extinguishers by closing the gas valves and electrical switches (if any) in case of fire flame, for any reason. Never use water to extinguish the flame.



☞ Operating voltage of the device 220 V- 240 V 220-240 V / 50/60 Hz. Do not use a supply voltage otherwise.

☞ The electrical connection must be done by inserting a leakage current fuse of 16mA in the supply fuse against the leakage current danger.



# TRANSPORTATION AND FLOOR REPLACEMENT

---

Do not clean with pressurized water.

The appliance is intended for industrial use only and should only be used by trained personnel.

The feet of the under-counter should be adjusted and the device should be operated on the scale level.

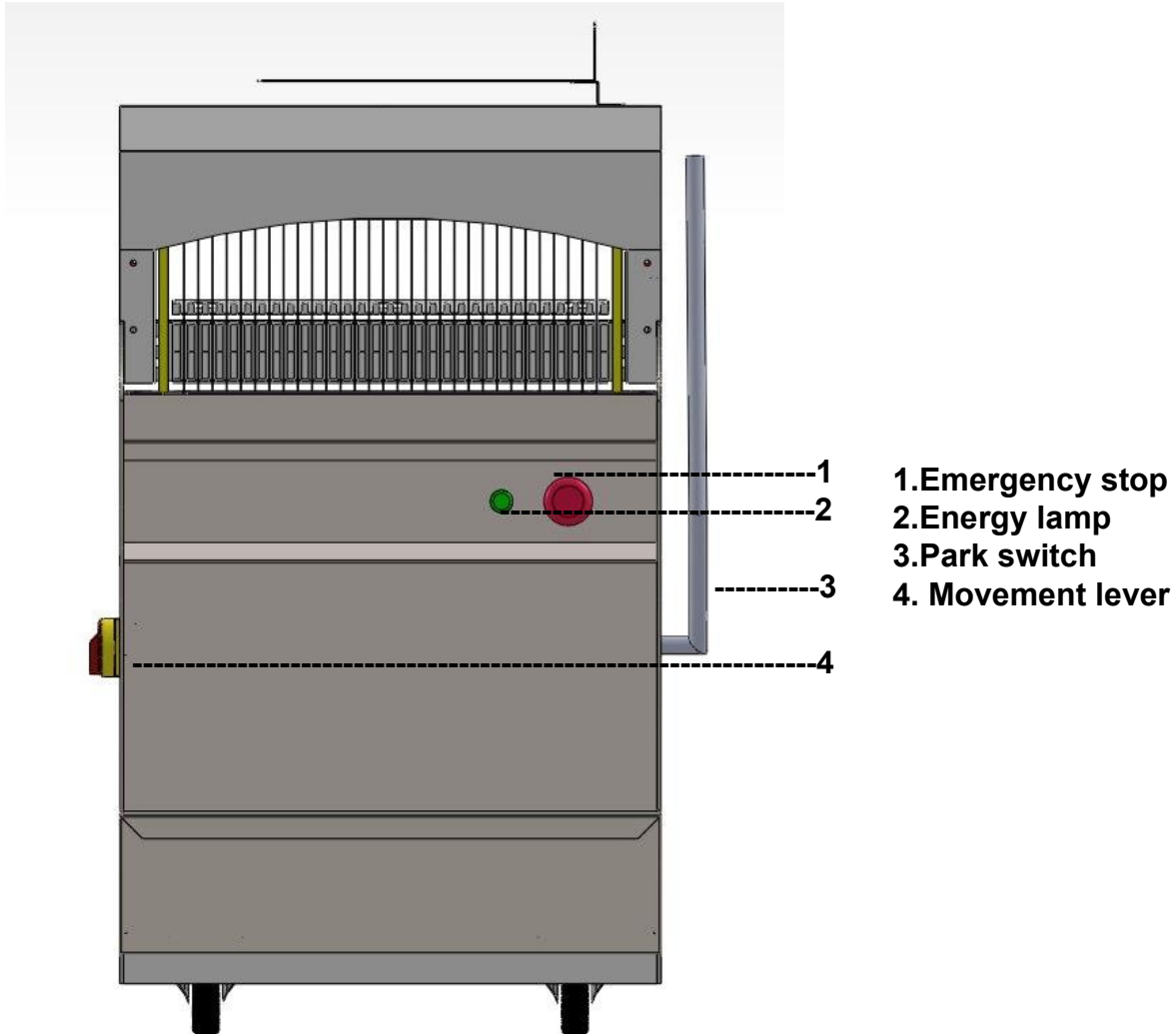
The electrical connection of the device must be checked by a qualified electrician. It must be connected to the fuse at a height of 170 cm.

Electrical connection; The leakage current fuse must be applied to the supply fuse against the leakage current risk.

## USE THE DEVICE CONTROL BOARD

---

**ATTENTION ! : YOU DO NOT OPERATE UNTIL YOU HAVE NOT TO CONTACT YOUR APPLICATION**



## USE INSTRUMENT

### Instruction manual

Wear a grounded prize.

Pull the arm.

Place the bread.

Slowly release the arm.

Breads will be cut automatically.

Never let your hands into the mechanism that the blades are moving.

# USE THE DEVICE

---

Slices of equal thickness on each size of bread  
Easy and precise adjustment according to the type and thickness of the pod  
Work places made of stainless steel  
Good for health  
Automatic stop at the end of cutting  
Easy to carry thanks to its wheels  
Stylish and aesthetic appearance  
5 mm reinforced body and stainless top cover  
Lubrication and maintenance-free bearing bearings  
Quiet and vibration-free operation  
Stainless and long lasting stainless steel blades  
Fresh or monophasic (220-380 Volt 50 Hz)  
The machine body is painted with long-lasting electrostatic paint  
Easy to use and clean, small space  
All parts are service garatilir  
2 years guarantee against manufacturing and installation mistakes  
Optional stainless steel body.

## CLEANING AND MAINTENANCE

---

### PERIODIC MAINTENANCE AND CLEANING

It should be done by the consumer:

#### Maintenance Instruction

Cut off the electrical connection before cleaning the machine.

Clean the machine as necessary.

Do not clean or service with pouring water.

Always observe the warning and warning labels on the appliance.

#### Fault and Reason

Do not interfere with the machine during electrical and other disturbances and contact the technical service immediately. Do not intervene in the machine until the technical service arrives.

#### APPLICATION LIFE:

When used under recommended conditions, the device has a lifetime of 10 years.

# USE THE DEVICE

---



**ATTENTION! : As described in the installation and use of the device**

**Care should be taken to establish and operate it. Any failure**  
**If you compare the status to our call center**  
**Please let us know.**

**INTERFERENCE AUTHORIZATION ON DEVICE FAILURE ONLY**  
**SGS KITCHEN AUTHORIZED SERVICES. AUTHORIZED**  
**SERVICES**

**A TECHNICAL ELEMENT OR NON-EMOTIONARY PERSONNEL**  
**DEVICE INTERVENTION**  
**THE DEVICE HAS EXCEPT OF THE WARRANTY SCOPE.**  
**NON-AUTHORIZED PERSONS WITH THIS REASON**  
**YOU MUST NOT ALLOW THE APPROVAL OF THE INTERFERENCE**  
**TO THE DEVICE.**

**THERE IS NO RESPONSIBILITY OF THE MANUFACTURING**  
**COMPANY RESPONSIBLE FOR THESE PRODUCTS. AUTHORIZED**  
**SERVICES DURING SERVICE**  
**ORIGINAL SPARE PARTS WITH ANY REASON**  
**USE IS NOT OFFERED. ANY SHAPE**  
**THESE ORIGINAL PARTS INSTALLED ON THE DEVICE**  
**THE DEVICE DISCLAIMS WARRANTY.**



1-) Warranty period starts from the delivery date of the goods and is 2 years.

2-) All parts of the product are guaranteed by our company.

3-) In case of malfunction within the warranty period, the time remaining in repair is added to the warranty period. The repair period of the goods is maximum 20 working days. This period shall commence from the date of notification of the fault of the goods to the service station or, in the absence of the service station, to the seller, dealer, agent, agent, importer or manufacturer of the goods. It is possible for the consumer to make a fault report by telephone, fax, e-mail, registered mail or similar. In case of disagreement, however, the obligation of proof belongs to the consumer. If the malfunction can not be remedied within 10 days, the manufacturer-producer or importer must allocate to the use of another consumer with similar characteristics until the completion of the repair of the goods.

4-) In case of malfunction due to material or workmanship or assembly errors in the warranty period of the goods, repair will be made without any charge under the name of labor cost, changed part price or any other name.

5-) Despite the consumer's right to repair;

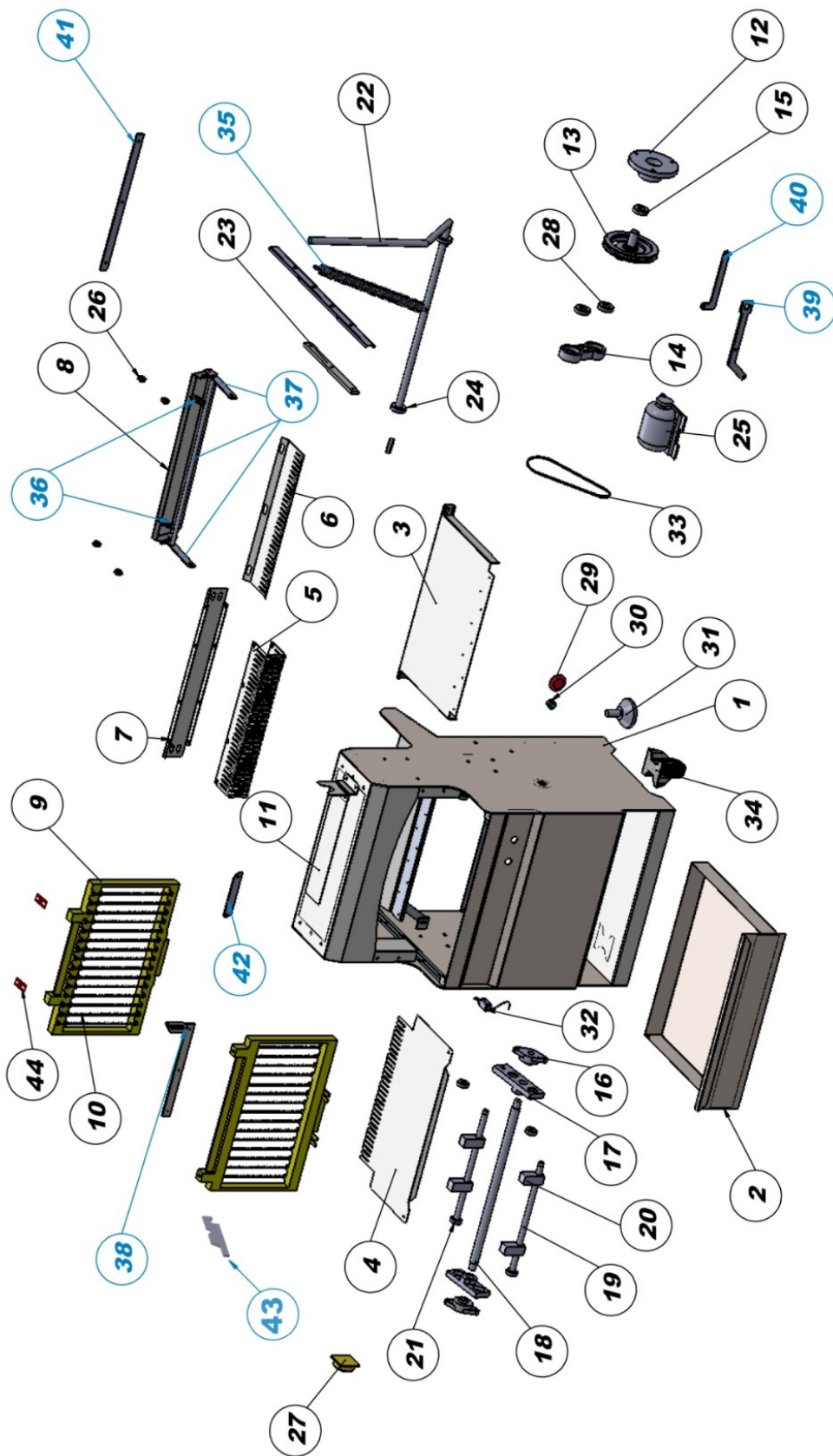
- From the date of delivery to the supplier, within a period of one year, provided that it is within the guarantee period; Six times within the warranty period specified by the manufacturer, manufacturer and / or importer at least four times, as well as to ensure that these failures are permanently incapable of benefiting from the goods,

- The maximum time required for the master to be exceeded,

- In case the service station of the company does not have a service station, it may request to reduce the cost of the consumer goods free of charge, to reduce the cost of the consumer goods, to determine if the seller, dealer, agency representative or importer or producer-

6-) Defects arising from unauthorized use in the manual of the goods are not covered by the guarantee.

7-) For problems that may arise in connection with the Warranty Certificate, the Ministry of Industry and Trade may apply to the Consumer and the General Directorate of Competition Protection.



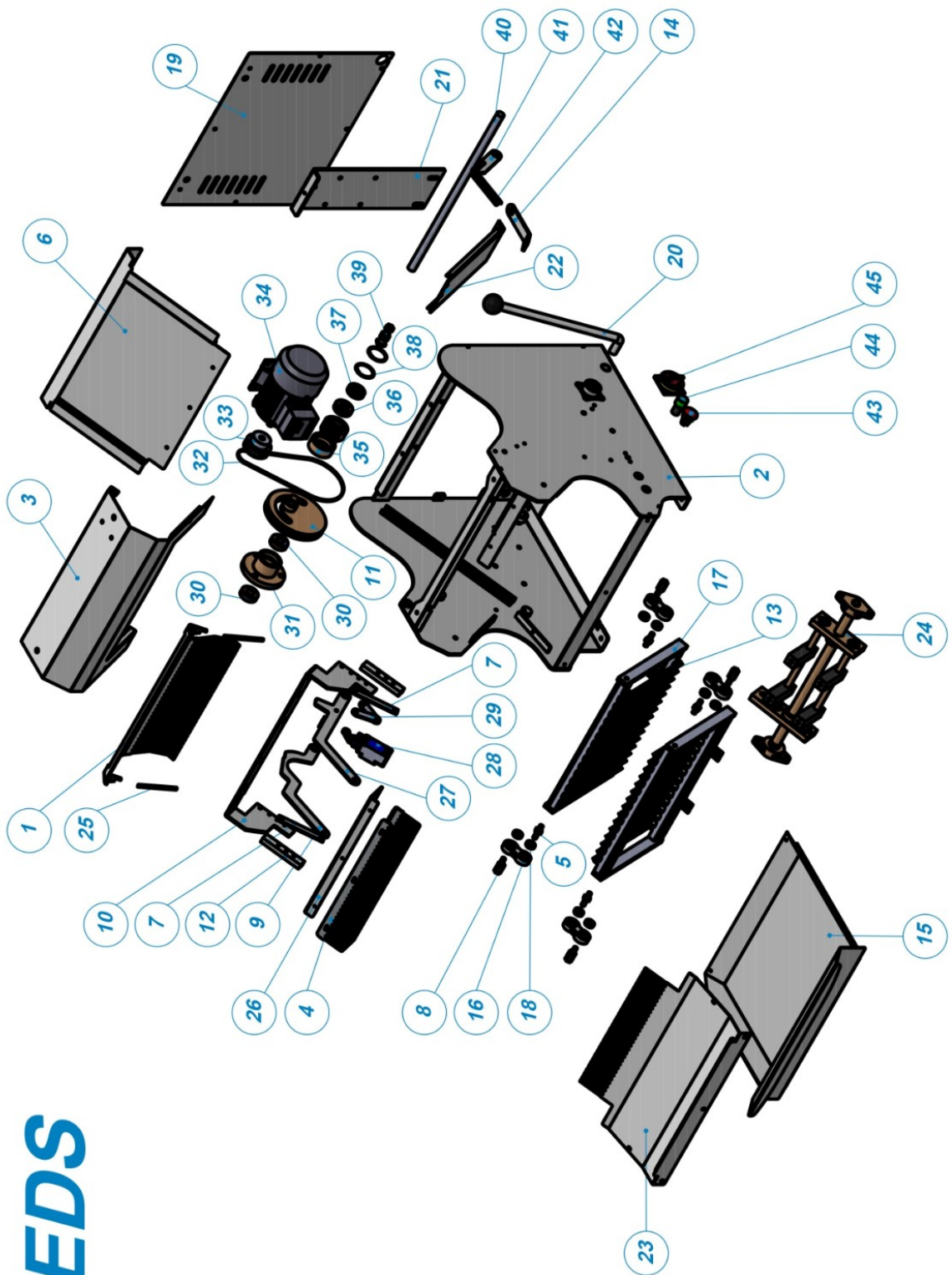
## BREAD SLICER MACHINE SPARE PART LIST

### (ED 01 / EDK 01)

CODE	PART NAME
1	MAIN BODY
2	DRAWER
3	BACK SHEET
4	FRONT SHEET
5	DRIVER
6	PRESS COMB
7	DRIVER FLAP
8	PRESS SHEET
9	CASSETTE SYSTEM
10	KNIFE
11	POCHETTE SHEET
12	MIRROR
13	ECCENTRIC PULLEY
14	GLASS
15	6205 ZZ ROLLER
16	UCFL204 ROLLER
17	MIDDLE AREA CAST
18	MIDDLE AREA SHAFT
19	CASSETTE CONNECTION SHAFT
20	MIDDLE AREA WEDGE
21	6202 ZZ ROLLER
22	DRIVER HANDLE
23	DRIVER TRACK
24	DRIVER HANDLE ROLLER
25	ENGINE
26	PRESS STEEL PLASTIC
27	SCHALTER
28	6204 ZZ ROLLER
29	EMERGENCY STOP BUTTON
30	START BUTTON
31	ROLLER FOOT
32	SWITCH
33	PULLEY BELT (13X725)
34	FIXED WHEEL
35	HANDLE SPRING
36	PRESS SPRING
37	SWING
38	DRIVER HANDLE
39	8MM HANDLE
40	4MM HANDLE
41	BACK SHEET LAMB
42	BACK SHEET SUPPORT PART
43	KNIFE TENSION PART
44	CASSETTE BELT



EDS



## BREAD SLICER MACHINE SPARE PART LIST (*EDS*)

CODE	PART NAME
1	PRESS SHEET
2	BODY
3	TOP SHEET
4	DRIVER
5	CASSETTE CONNECTION SCREW (SHORT)
6	BACK SHEET
7	DRIVER HANDLE UPPER CONNECTION
8	CASSETTE CONNECTION SCREW (LONG)
9	DRIVER SUPPORTING SHEET (LEFT)
10	DRIVER CONNECTION PART
11	VOLANTE
12	DRIVER CONNECTION PLASTIC
13	KNIFE
14	DRIVER SPRING CONNECTION SHEET
15	DRAWER
16	CASSETTE CONNECTION PLASTIC
17	CASSETTE
18	6000 ZZ ROLLER
19	BACK SHEET
20	DRIVER HANDLE
21	ENGINE CONNECTION PART
22	BACK SHEET SUPPORTING PART
23	CUTTING SURFACE
24	MIDDLE AREA SHAFT SYSTEM
25	PRESS SHEET SPRING
26	DRIVER CONNECTION SHEET
27	DRIVER SUPPORTING SHEET (RIGHT)
28	SWITCH
29	DRIVER SUPPORTING SHEET - BOTTOM CONNECTION
30	6205 ZZ ROLLER
31	VOLANTE PLASTIC
32	BELT
33	ENGINE PULLEY
34	ENGINE
35	VOLANTE- MIDDLE AREA SHAFT SYSTEM CONNECTION
36	6204 ZZ ROLLER
37	6005 ZZ ROLLER
38	SEKMAN
39	Ø20 SPECIAL SCREW
40	DRIVER SHAFT
41	DRIVER SPRING SHEET
42	DRIVER SPRING
43	EMERGENCY STOP BUTTON
44	GREEN LAMP
45	SCHALTER







**SGS MUTFAK EKIPMANLARI LTD. STI.**

Cumhuriyet Mah. Balkan Cad. No:20

Yazıbaşı-Torbalı/İZMİR-TÜRKİYE

Tel: +90 232 257 52 23

Fax: +90 232 257 53 03

e-mail: [info@sgsoven.com](mailto:info@sgsoven.com)

[www.sgsoven.com](http://www.sgsoven.com)